

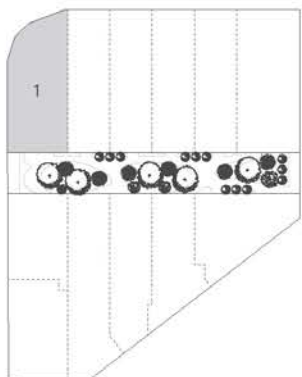


Park Terraces

S H E N T O N P A R K

Park Terraces

SHENTON PARK



TERRACE 1

| | |
|--------------|-------------------|
| BEDROOMS | 3 |
| BATHROOMS | 2.5 |
| CAR BAYS | 2 |
| LIVING AREA | 198m ² |
| GARDEN (G) | 39m ² |
| BALCONY (L1) | 20m ² |
| TERRACE (L1) | 12m ² |
| STORE | 4m ² |
| PARKING | 37m ² |

310m²
TOTAL AREA



G



L1



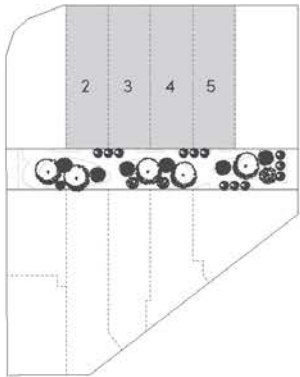
L2



Disclaimer: Terrace home areas given are based on architectural measurements which may vary from strata areas as different methods of measurement are applied. Variations from the strata plan may also apply. Loose furniture is indicative only. Shape and configuration of living areas, balconies, wall structures, doors, windows, columns, air-conditioning condensers and ducts may differ from those illustrated.

Park Terraces

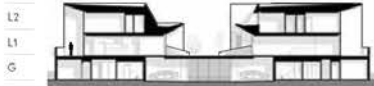
SHENTON PARK



TERRACE 2, 3, 4 & 5

| | |
|--------------|-------------------|
| BEDROOMS | 3 |
| BATHROOMS | 2.5 |
| CAR BAYS | 2 |
| LIVING AREA | 186m ² |
| GARDEN (G) | 23m ² |
| BALCONY (L1) | 17m ² |
| TERRACE (L2) | 16m ² |
| STORE | 4m ² |
| PARKING | 34m ² |

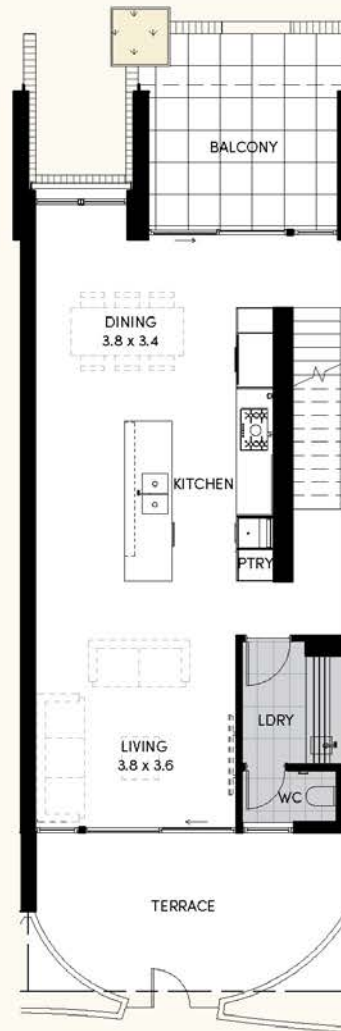
279m²
TOTAL AREA



G



L1



L2

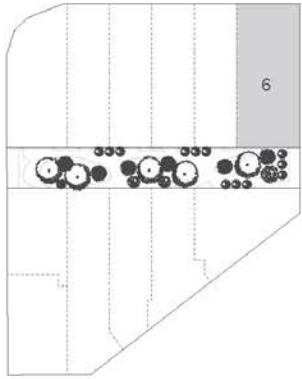


Disclaimer: Terrace home areas given are based on architectural measurements which may vary from strata areas as different methods of measurement are applied. Variations from the strata plan may also apply. Loose furniture is indicative only. Shape and configuration of living areas, balconies, wall structures, doors, windows, columns, air-conditioning condensers and ducts may differ from those illustrated.



Park Terraces

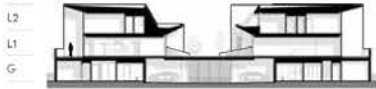
SHENTON PARK



TERRACE 6

| | |
|--------------|-------------------|
| BEDROOMS | 3 |
| BATHROOMS | 2.5 |
| CAR BAYS | 2 |
| LIVING AREA | 195m ² |
| GARDEN (G) | 75m ² |
| BALCONY (L1) | 20m ² |
| TERRACE (L2) | 17m ² |
| STORE | 3m ² |
| PARKING | 36m ² |

345m²
TOTAL AREA



Disclaimer: Terrace home areas given are based on architectural measurements which may vary from strata areas as different methods of measurement are applied. Variations from the strata plan may also apply. Loose furniture is indicative only. Shape and configuration of living areas, balconies, wall structures, doors, windows, columns, air-conditioning condensers and ducts may differ from those illustrated.

G



L1

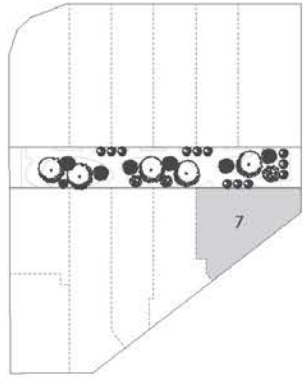


L2



Park Terraces

SHENTON PARK



TERRACE 7

| | |
|--------------|-------------------|
| BEDROOMS | 3 |
| BATHROOMS | 2.5 |
| CAR BAYS | 2 |
| LIVING AREA | 187m ² |
| GARDEN (G) | 43m ² |
| BALCONY (L1) | 15m ² |
| STORE | 4m ² |
| PARKING | 32m ² |

271m²

TOTAL AREA

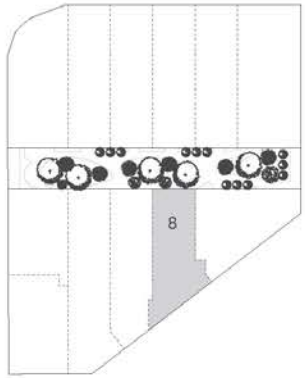


Disclaimer: Terrace home areas given are based on architectural measurements which may vary from strata areas as different methods of measurement are applied. Variations from the strata plan may also apply. Loose furniture is indicative only. Shape and configuration of living areas, balconies, wall structures, doors, windows, columns, air-conditioning condensers and ducts may differ from those illustrated.



Park Terraces

SHENTON PARK

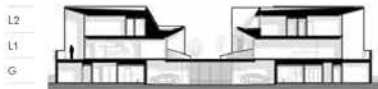


TERRACE 8

| | |
|--------------|-------------------|
| BEDROOMS | 3 |
| BATHROOMS | 2 |
| CAR BAYS | 2 |
| LIVING AREA | 157m ² |
| GARDEN (G) | 30m ² |
| BALCONY (L1) | 15m ² |
| TERRACE (L1) | 13m ² |
| STORE | 4m ² |
| PARKING | 33m ² |

252m²

TOTAL AREA



Disclaimer: Terrace home areas given are based on architectural measurements which may vary from strata areas as different methods of measurement are applied. Variations from the strata plan may also apply. Loose furniture is indicative only. Shape and configuration of living areas, balconies, wall structures, doors, windows, columns, air-conditioning condensers and ducts may differ from those illustrated.

G



L1

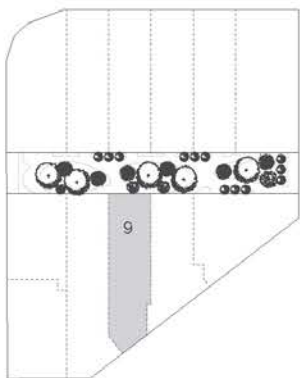


L2



Park Terraces

SHENTON PARK



TERRACE 9

| | |
|--------------|-------------------|
| BEDROOMS | 3 |
| BATHROOMS | 2.5 |
| CAR BAYS | 2 |
| LIVING AREA | 212m ² |
| GARDEN (G) | 22m ² |
| BALCONY (L1) | 17m ² |
| TERRACE (L2) | 14m ² |
| STORE | 4m ² |
| PARKING | 34m ² |

303m²
TOTAL AREA

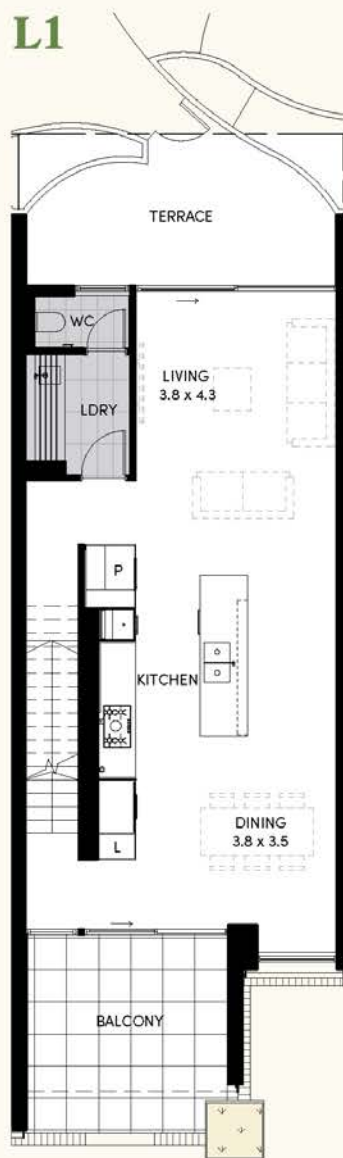


Disclaimer: Terrace home areas given are based on architectural measurements which may vary from strata areas as different methods of measurement are applied. Variations from the strata plan may also apply. Loose furniture is indicative only. Shape and configuration of living areas, balconies, wall structures, doors, windows, columns, air-conditioning condensers and ducts may differ from those illustrated.

G



L1



L2

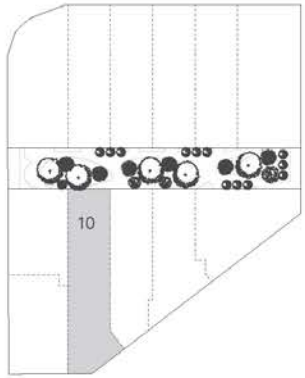


Optional upgrade to 4 bedroom
3.5 Bathroom terrace available.



Park Terraces

SHENTON PARK



TERRACE 10

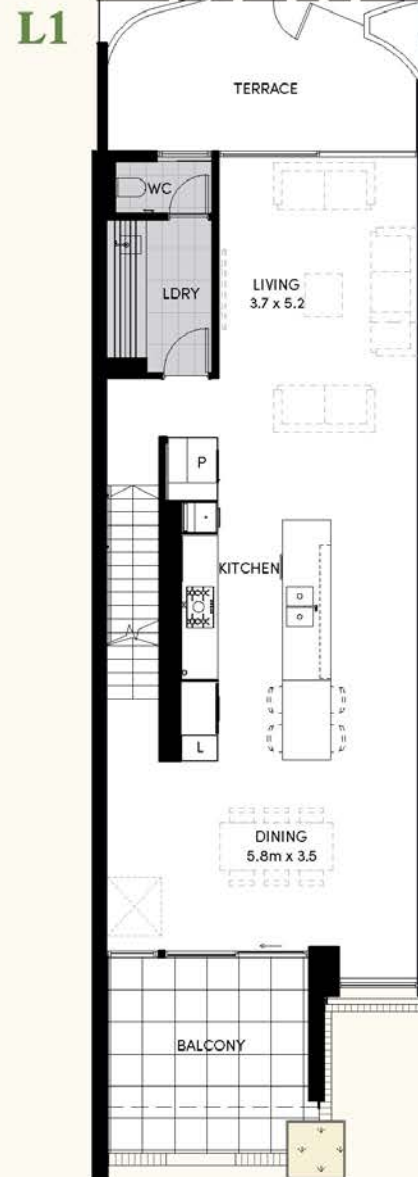
| | |
|--------------|-------------------|
| BEDROOMS | 3 |
| BATHROOMS | 2.5 |
| CAR BAYS | 2 |
| LIVING AREA | 260m ² |
| GARDEN (G) | 40m ² |
| BALCONY (L1) | 17m ² |
| TERRACE (L1) | 16m ² |
| STORE | 7m ² |
| PARKING | 34m ² |

374m²

TOTAL AREA



Disclaimer: Terrace home areas given are based on architectural measurements which may vary from strata areas as different methods of measurement are applied. Variations from the strata plan may also apply. Loose furniture is indicative only. Shape and configuration of living areas, balconies, wall structures, doors, windows, columns, air-conditioning condensers and ducts may differ from those illustrated.

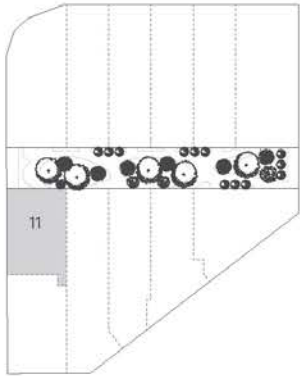


Optional upgrade to 4 bedroom
3.5 Bathroom terrace available.



Park Terraces

SHENTON PARK



TERRACE 11

| | |
|--------------|-------------------|
| BEDROOMS | 2 |
| BATHROOMS | 2.5 |
| CAR BAYS | 1 |
| LIVING AREA | 148m ² |
| GARDEN (G) | 13m ² |
| TERRACE (L1) | 13m ² |
| STORE | 4m ² |
| PARKING | 18m ² |

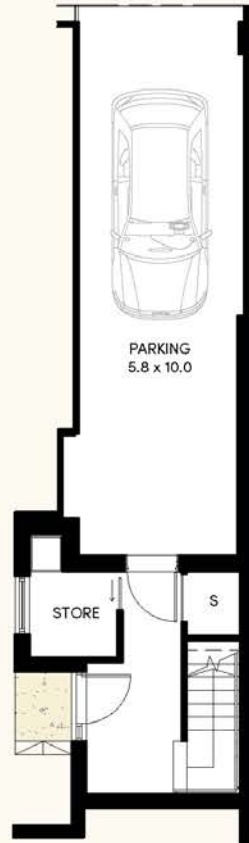
196m²

TOTAL AREA



Disclaimer: Terrace home areas given are based on architectural measurements which may vary from strata areas as different methods of measurement are applied. Variations from the strata plan may also apply. Loose furniture is indicative only. Shape and configuration of living areas, balconies, wall structures, doors, windows, columns, air-conditioning condensers and ducts may differ from those illustrated.

G



L1

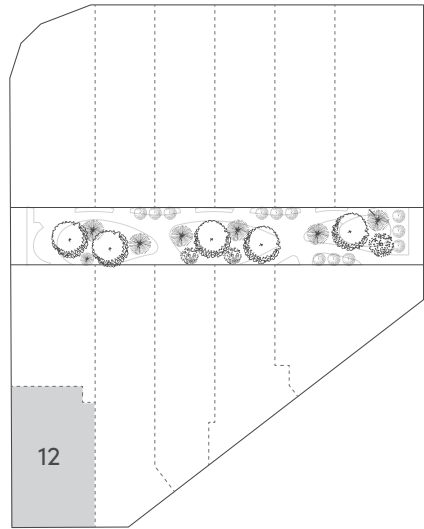


L2



Park Terraces

SHENTON PARK

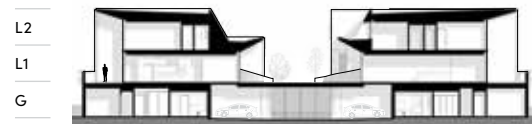


TERRACE 12

| | |
|--------------|-------------------|
| BEDROOMS | 3 |
| BATHROOMS | 2 |
| CAR BAYS | 2 |
| LIVING AREA | 163m ² |
| GARDEN (G) | 23m ² |
| BALCONY (L1) | 16m ² |
| STORE | 5m ² |
| GARAGE | 34m ² |

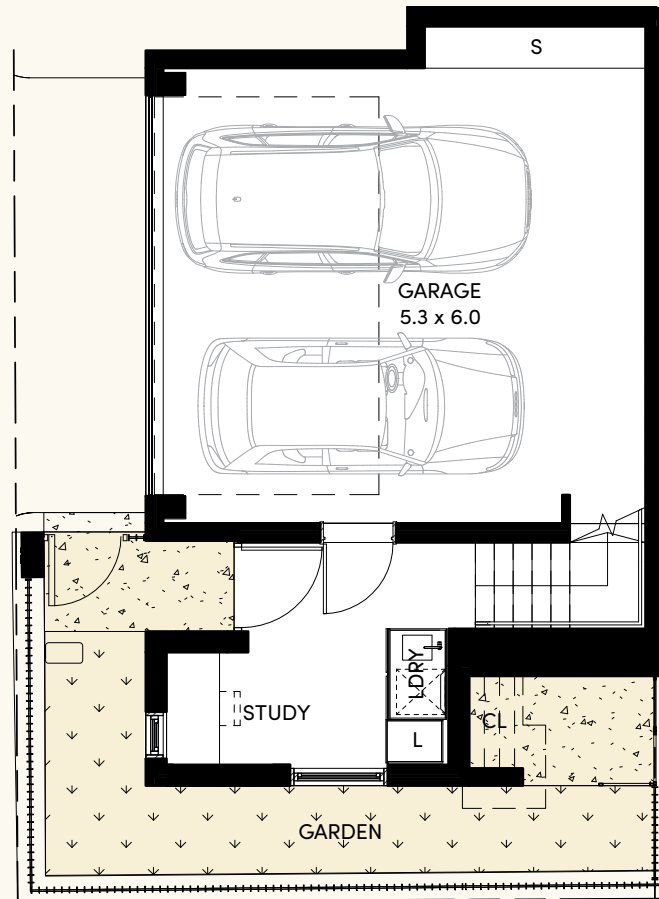
241m²

TOTAL AREA

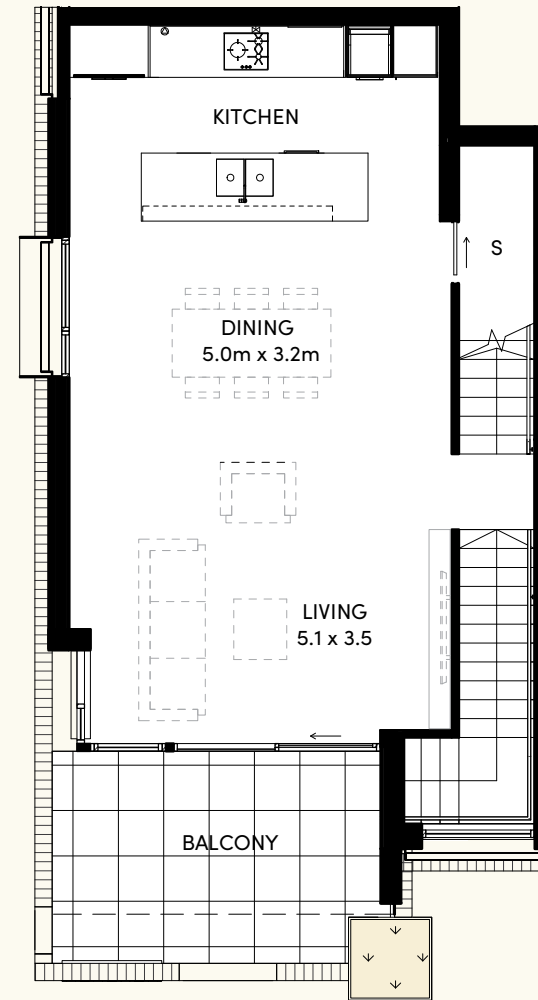


Disclaimer: Terrace home areas given are based on architectural measurements which may vary from strata areas as different methods of measurement are applied. Variations from the strata plan may also apply. Loose furniture is indicative only. Shape and configuration of living areas, balconies, wall structures, doors, windows, columns, air-conditioning condensers and ducts may differ from those illustrated.

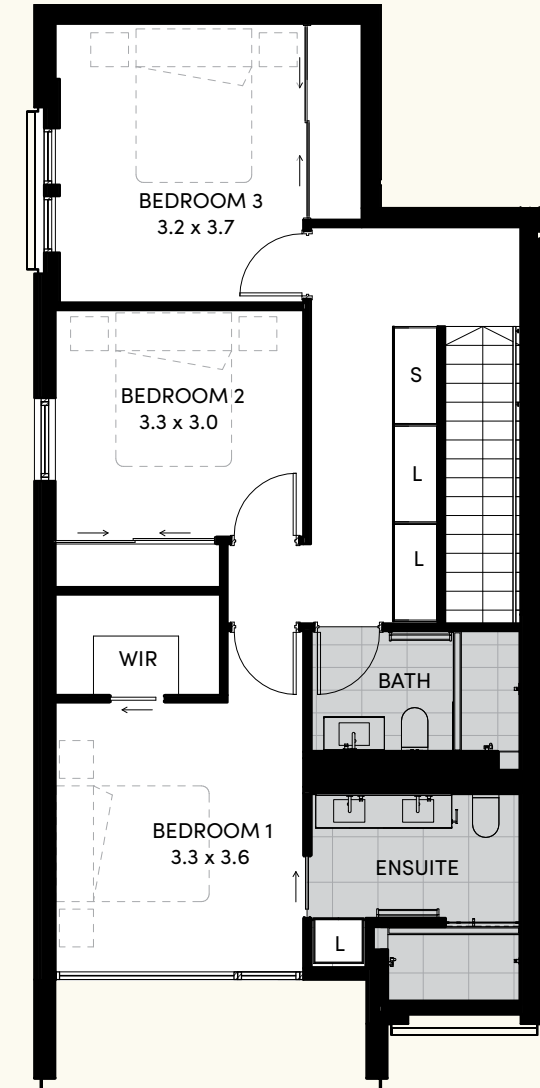
G



L1



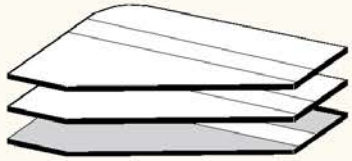
L2



Park Terraces

SHENTON PARK

SITE PLAN



GROUND LEVEL

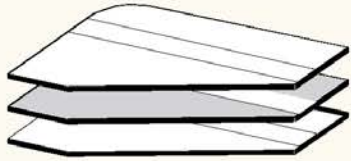
Disclaimer: Terrace home areas given are based on architectural measurements which may vary from strata areas as different methods of measurement are applied. Variations from the strata plan may also apply. Loose furniture is indicative only. Shapes and configuration of living areas, balconies, wall structures, doors, windows, columns, air-conditioning condensers and ducts may differ from those illustrated.



Park Terraces

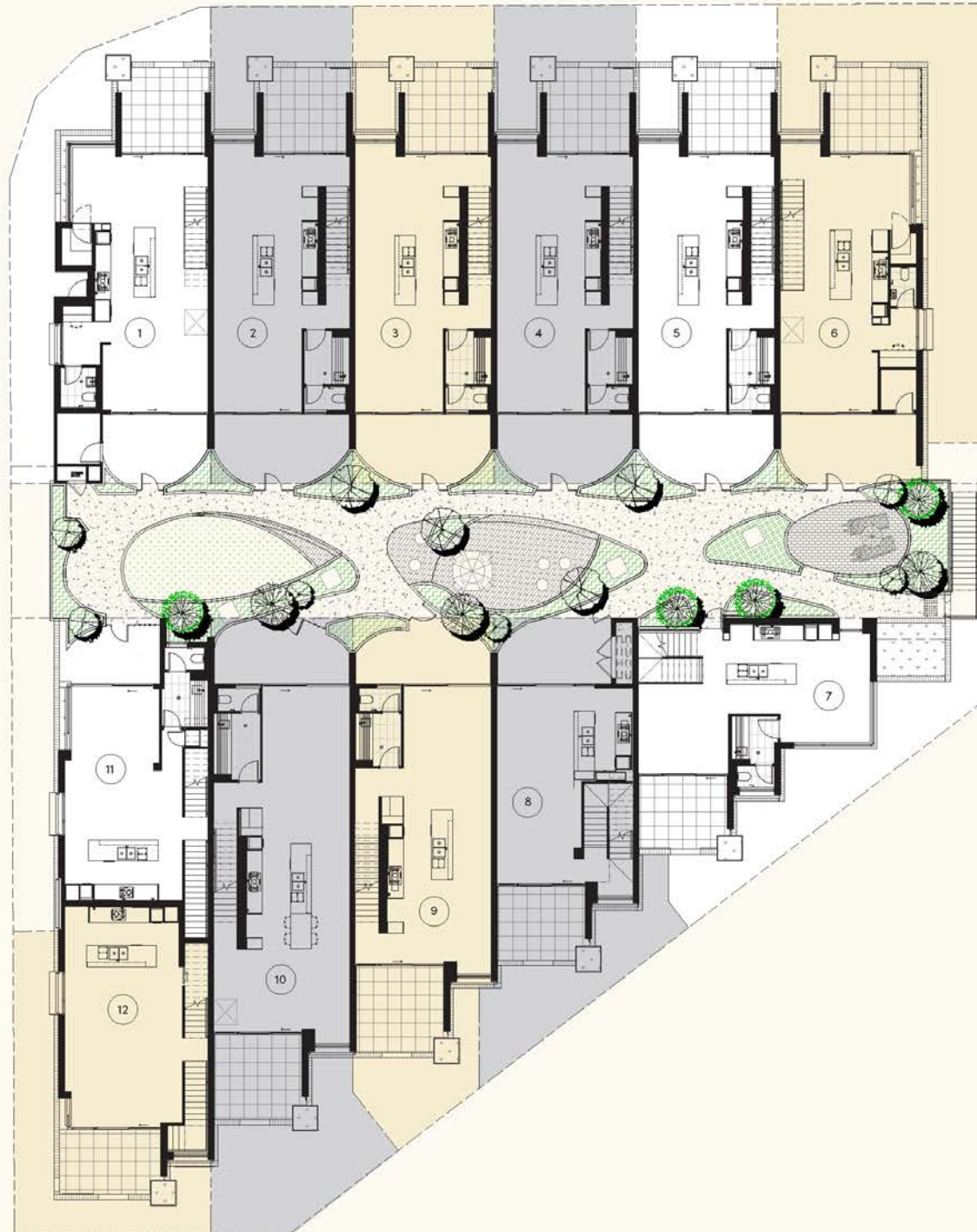
SHENTON PARK

SITE PLAN



LEVEL ONE

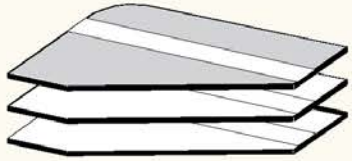
Disclaimer: Terrace home areas given are based on architectural measurements which may vary from strata areas as different methods of measurement are applied. Variations from the strata plan may also apply. Loose furniture is indicative only. Shape and configuration of living areas, balconies, wall structures, doors, windows, columns, air-conditioning condensers and ducts may differ from those illustrated.



Park Terraces

SHENTON PARK

SITE PLAN



LEVEL TWO

Disclaimer: Terrace home areas given are based on architectural measurements which may vary from strata areas as different methods of measurement are applied. Variations from the strata plan may also apply. Loose furniture is indicative only. Shapes and configuration of living areas, balconies, wall structures, doors, windows, columns, air-conditioning condensers and ducts may differ from those illustrated.



Park Terraces

SHENTON PARK