

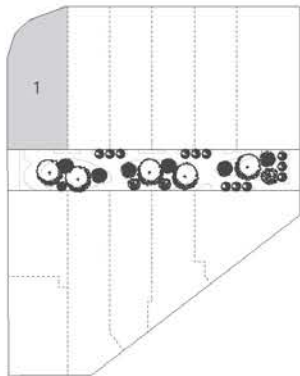
The background is a solid green color with faint, detailed botanical line drawings of various plant parts, including flower heads, seed pods, and leaves, scattered across the surface.

Park Terraces

S H E N T O N P A R K

Park Terraces

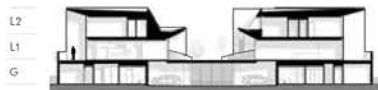
SHENTON PARK



TERRACE 1

BEDROOMS	3
BATHROOMS	2.5
CAR BAYS	2
LIVING AREA	198m ²
GARDEN (G)	39m ²
BALCONY (L1)	20m ²
TERRACE (L1)	12m ²
STORE	4m ²
PARKING	37m ²

310m²
TOTAL AREA



Disclaimer: Terrace home areas given are based on architectural measurements which may vary from strata areas as different methods of measurement are applied. Variations from the strata plan may also apply. Loose furniture is indicative only. Shape and configuration of living areas, balconies, wall structures, doors, windows, columns, air-conditioning condensers and ducts may differ from those illustrated.

G



L1

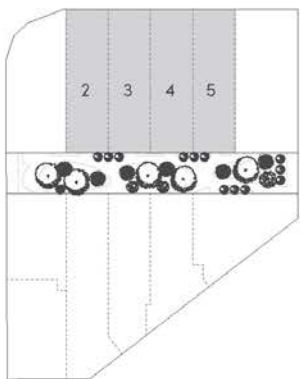


L2



Park Terraces

SHENTON PARK



TERRACE 2, 3, 4 & 5

BEDROOMS	3
BATHROOMS	2.5
CAR BAYS	2
LIVING AREA	186m ²
GARDEN (G)	23m ²
BALCONY (L1)	17m ²
TERRACE (L2)	16m ²
STORE	4m ²
PARKING	34m ²

279m²

TOTAL AREA

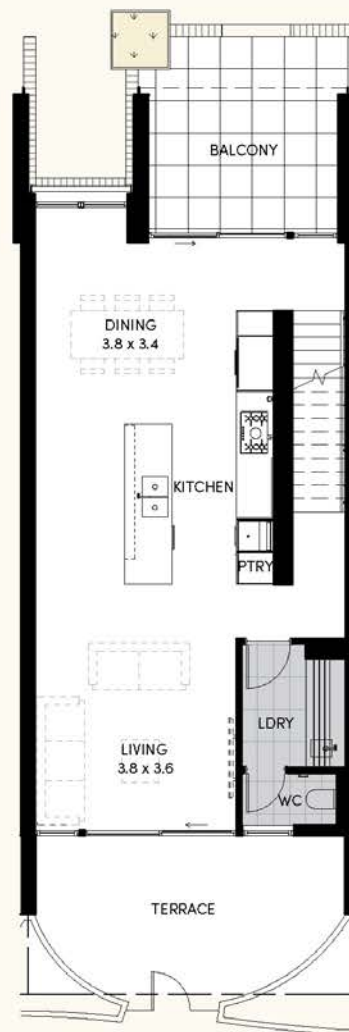


Disclaimer: Terrace home areas given are based on architectural measurements which may vary from strata areas as different methods of measurement are applied. Variations from the strata plan may also apply. Loose furniture is indicative only. Shape and configuration of living areas, balconies, wall structures, doors, windows, columns, air-conditioning condensers and ducts may differ from those illustrated.

G



L1

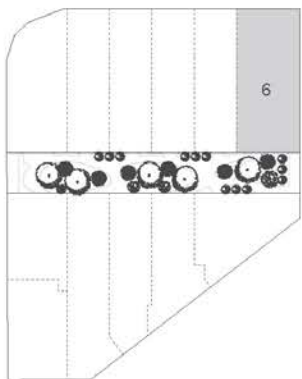


L2



Park Terraces

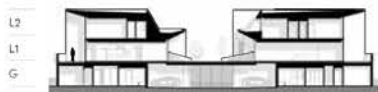
SHENTON PARK



TERRACE 6

BEDROOMS	3
BATHROOMS	2.5
CAR BAYS	2
LIVING AREA	195m ²
GARDEN (G)	75m ²
BALCONY (L1)	20m ²
TERRACE (L2)	17m ²
STORE	3m ²
PARKING	36m ²

345m²
TOTAL AREA



Disclaimer: Terrace home areas given are based on architectural measurements which may vary from strata areas as different methods of measurement are applied. Variations from the strata plan may also apply. Loose furniture is indicative only. Shape and configuration of living areas, balconies, wall structures, doors, windows, columns, air-conditioning condensers and ducts may differ from those illustrated.

G



L1



L2

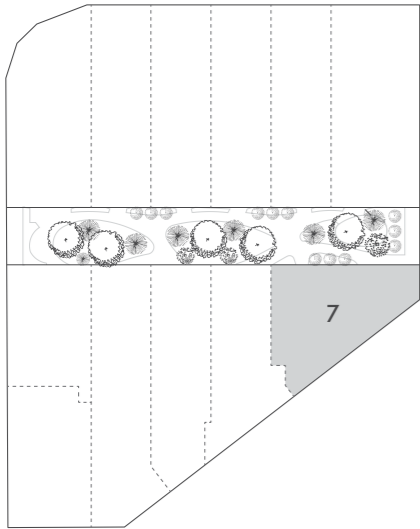


SCALE 1:100 @ A3



Park Terraces

SHENTON PARK

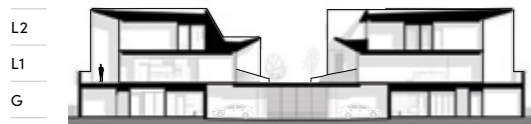


TERRACE 7

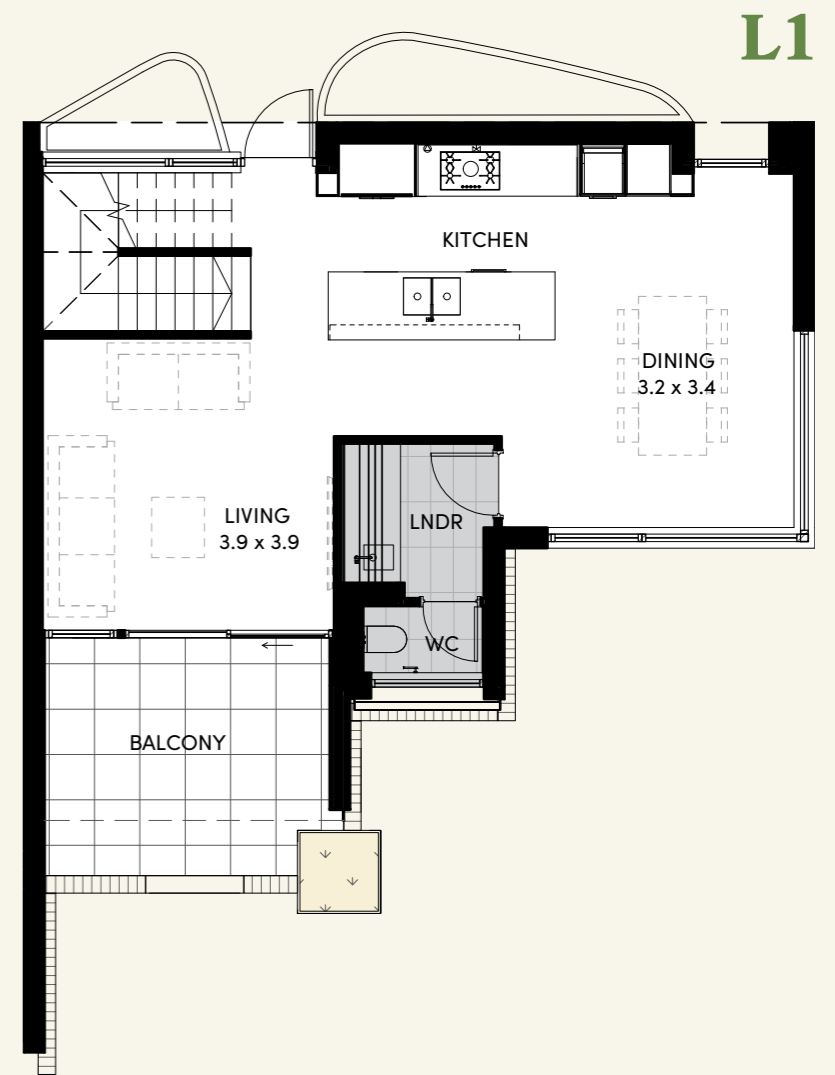
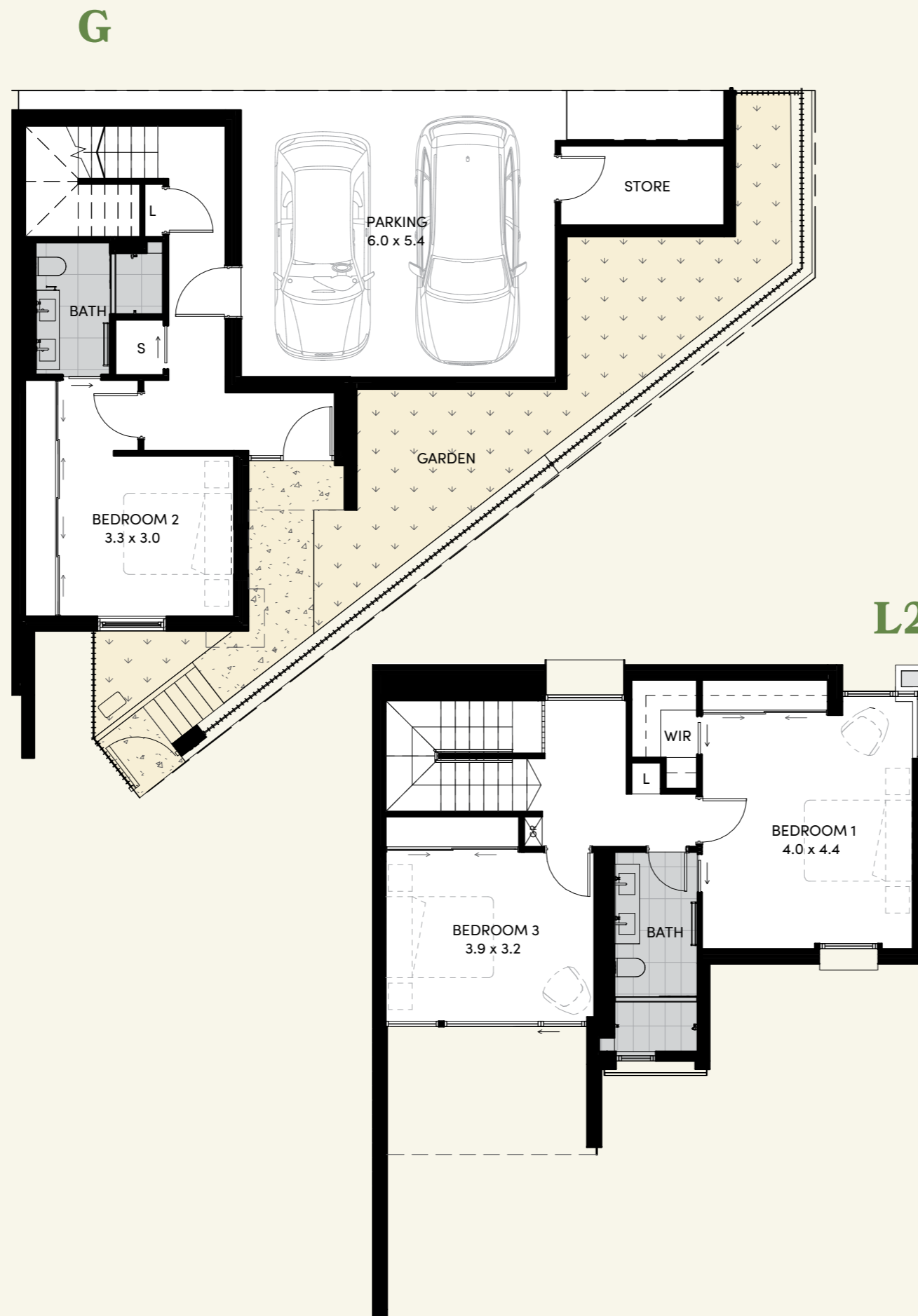
BEDROOMS	3
BATHROOMS	2.5
CAR BAYS	2
LIVING AREA	187m ²
GARDEN (G)	43m ²
BALCONY (L1)	15m ²
STORE	4m ²
PARKING	32m ²

271m²

TOTAL AREA

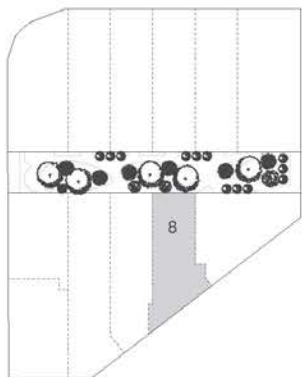


Disclaimer: Terrace home areas given are based on architectural measurements which may vary from strata areas as different methods of measurement are applied. Variations from the strata plan may also apply. Loose furniture is indicative only. Shape and configuration of living areas, balconies, wall structures, doors, windows, columns, air-conditioning condensers and ducts may differ from those illustrated.



Park Terraces

SHENTON PARK

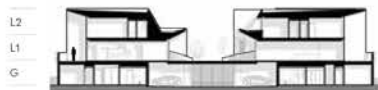


TERRACE 8

BEDROOMS	3
BATHROOMS	2
CAR BAYS	2
LIVING AREA	157m ²
GARDEN (G)	30m ²
BALCONY (L1)	15m ²
TERRACE (L1)	13m ²
STORE	4m ²
PARKING	33m ²

252m²

TOTAL AREA



Disclaimer: Terrace home areas given are based on architectural measurements which may vary from strata areas as different methods of measurement are applied. Variations from the strata plan may also apply. Loose furniture is indicative only. Shape and configuration of living areas, balconies, wall structures, doors, windows, columns, air-conditioning condensers and ducts may differ from those illustrated.

G



L1

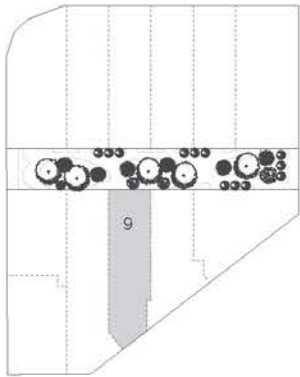


L2



Park Terraces

SHENTON PARK



TERRACE 9

BEDROOMS	3
BATHROOMS	2.5
CAR BAYS	2
LIVING AREA	212m ²
GARDEN (G)	22m ²
BALCONY (L1)	17m ²
TERRACE (L2)	14m ²
STORE	4m ²
PARKING	34m ²

303m²

TOTAL AREA

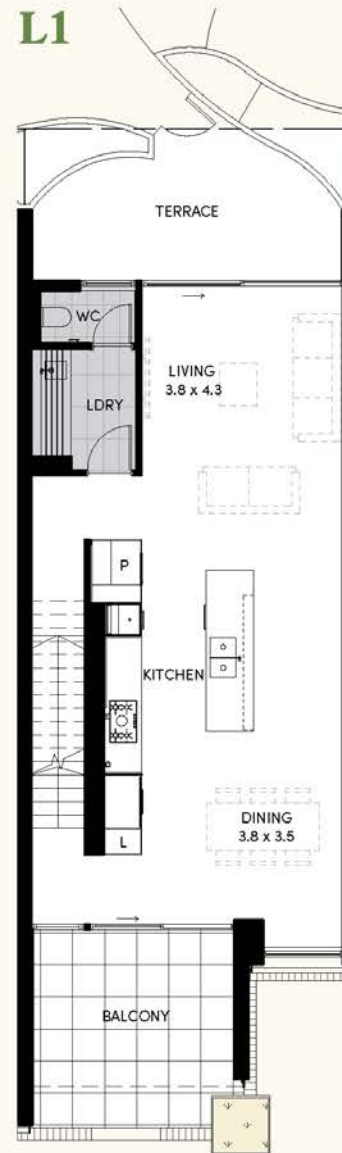


Disclaimer: Terrace home areas given are based on architectural measurements which may vary from strata areas as different methods of measurement are applied. Variations from the strata plan may also apply. Loose furniture is indicative only. Shape and configuration of living areas, balconies, wall structures, doors, windows, columns, air-conditioning condensers and ducts may differ from those illustrated.

G



L1



Optional upgrade to 4 bedroom
3.5 Bathroom terrace available.

L2

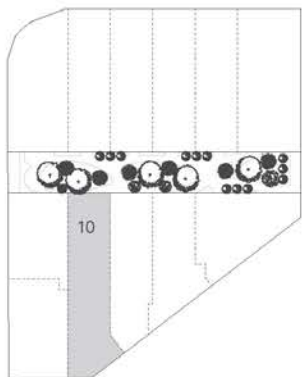


SCALE 1:100 @ A3



Park Terraces

SHENTON PARK

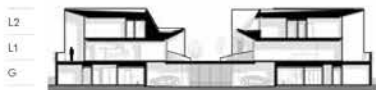


TERRACE 10

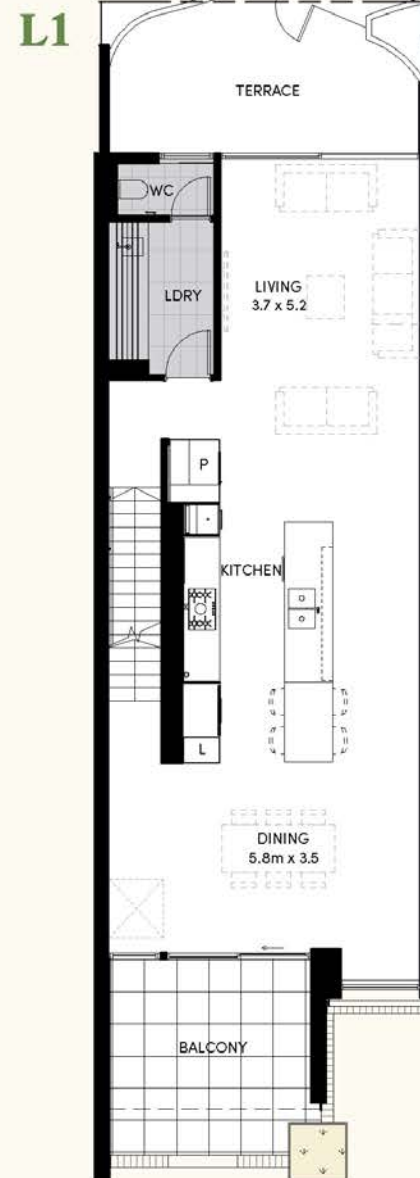
BEDROOMS	3
BATHROOMS	2.5
CAR BAYS	2
LIVING AREA	260m ²
GARDEN (G)	40m ²
BALCONY (L1)	17m ²
TERRACE (L1)	16m ²
STORE	7m ²
PARKING	34m ²

374m²

TOTAL AREA



Disclaimer: Terrace home areas given are based on architectural measurements which may vary from strata areas as different methods of measurement are applied. Variations from the strata plan may also apply. Loose furniture is indicative only. Shape and configuration of living areas, balconies, wall structures, doors, windows, columns, air-conditioning condensers and ducts may differ from those illustrated.



Optional upgrade to 4 bedroom
3.5 Bathroom terrace available.

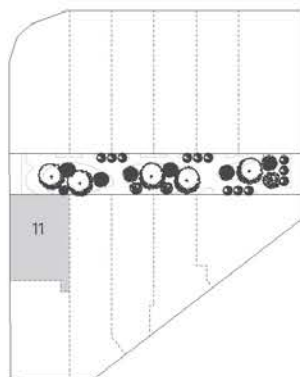


SCALE 1:100 @ A3



Park Terraces

SHENTON PARK



TERRACE 11

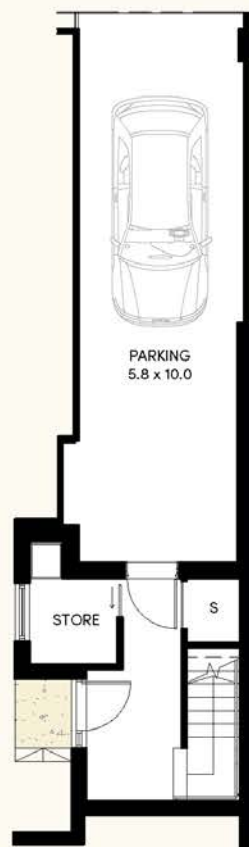
BEDROOMS	2
BATHROOMS	2.5
CAR BAYS	1
LIVING AREA	148m ²
GARDEN (G)	13m ²
TERRACE (L1)	13m ²
STORE	4m ²
PARKING	18m ²

196m²
TOTAL AREA



Disclaimer: Terrace home areas given are based on architectural measurements which may vary from strata areas as different methods of measurement are applied. Variations from the strata plan may also apply. Loose furniture is indicative only. Shape and configuration of living areas, balconies, wall structures, doors, windows, columns, air-conditioning condensers and ducts may differ from those illustrated.

G



L1

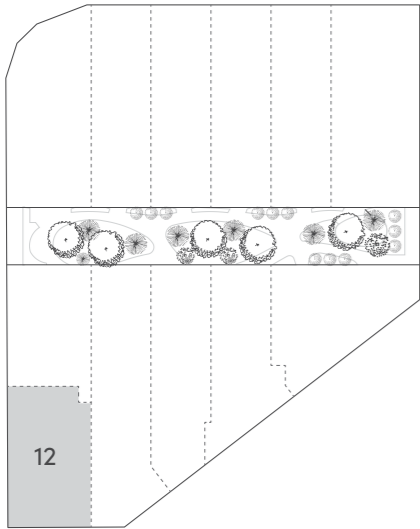


L2



Park Terraces

SHENTON PARK

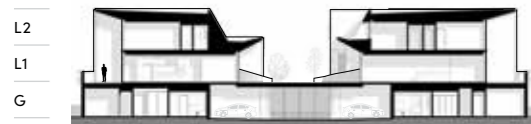


TERRACE 12

BEDROOMS	3
BATHROOMS	2
CAR BAYS	2
LIVING AREA	163m ²
GARDEN (G)	23m ²
BALCONY (L1)	16m ²
STORE	5m ²
GARAGE	34m ²

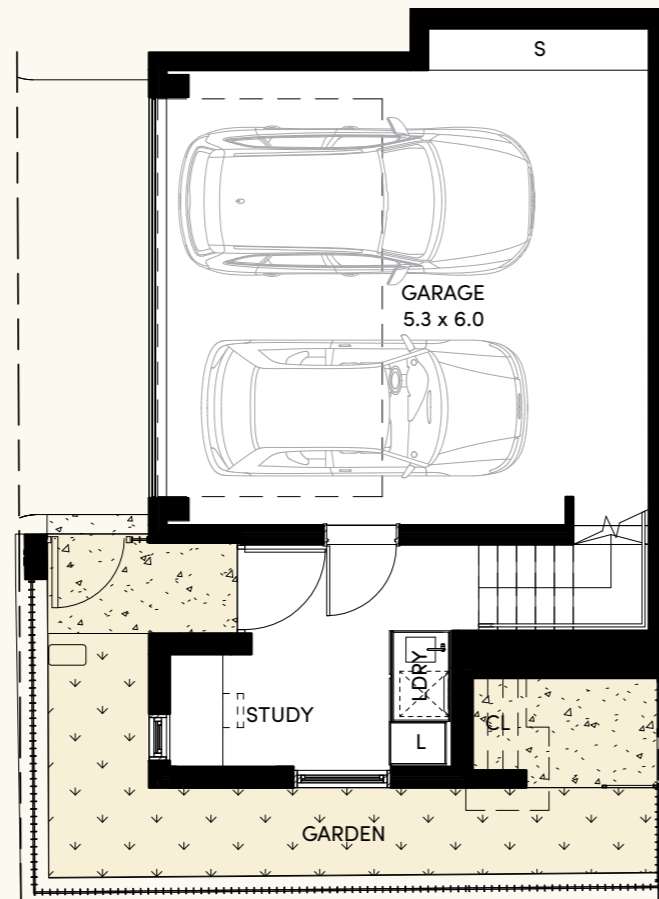
241m²

TOTAL AREA

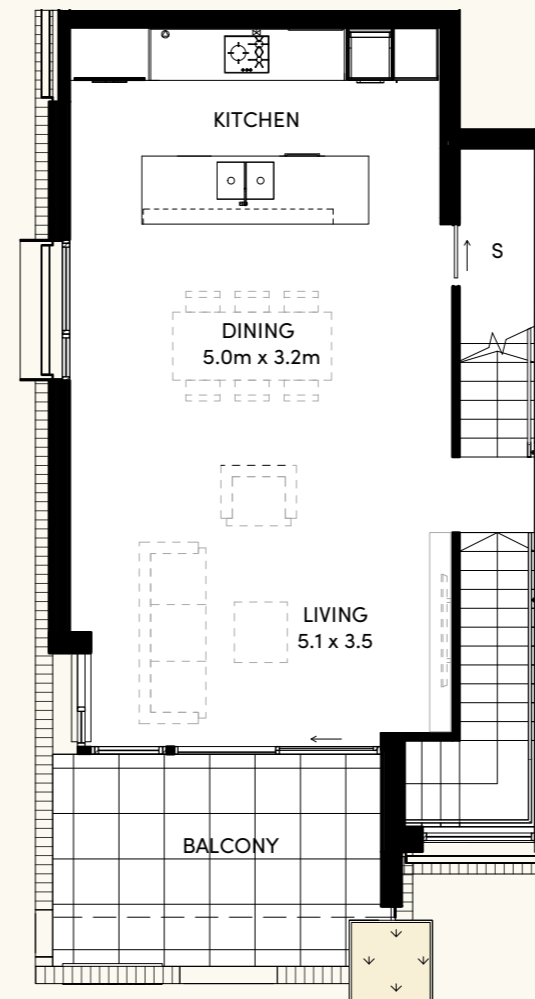


Disclaimer: Terrace home areas given are based on architectural measurements which may vary from strata areas as different methods of measurement are applied. Variations from the strata plan may also apply. Loose furniture is indicative only. Shape and configuration of living areas, balconies, wall structures, doors, windows, columns, air-conditioning condensers and ducts may differ from those illustrated.

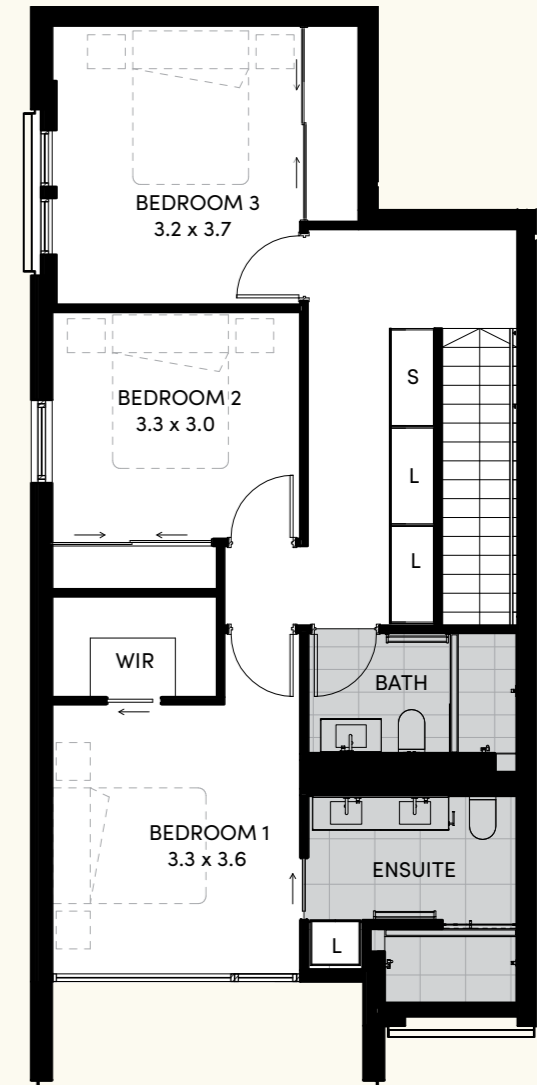
G



L1



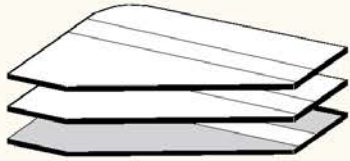
L2



Park Terraces

SHENTON PARK

SITE PLAN



GROUND LEVEL

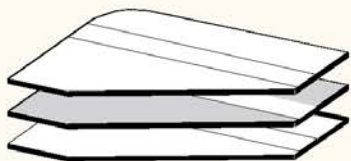
Disclaimer: Terrace home areas given are based on architectural measurements which may vary from strata areas as different methods of measurement are applied. Variations from the strata plan may also apply. Loose furniture is indicative only. Shops and configuration of living areas, balconies, wall structures, doors, windows, columns, air-conditioning condensers and ducts may differ from those illustrated.



Park Terraces

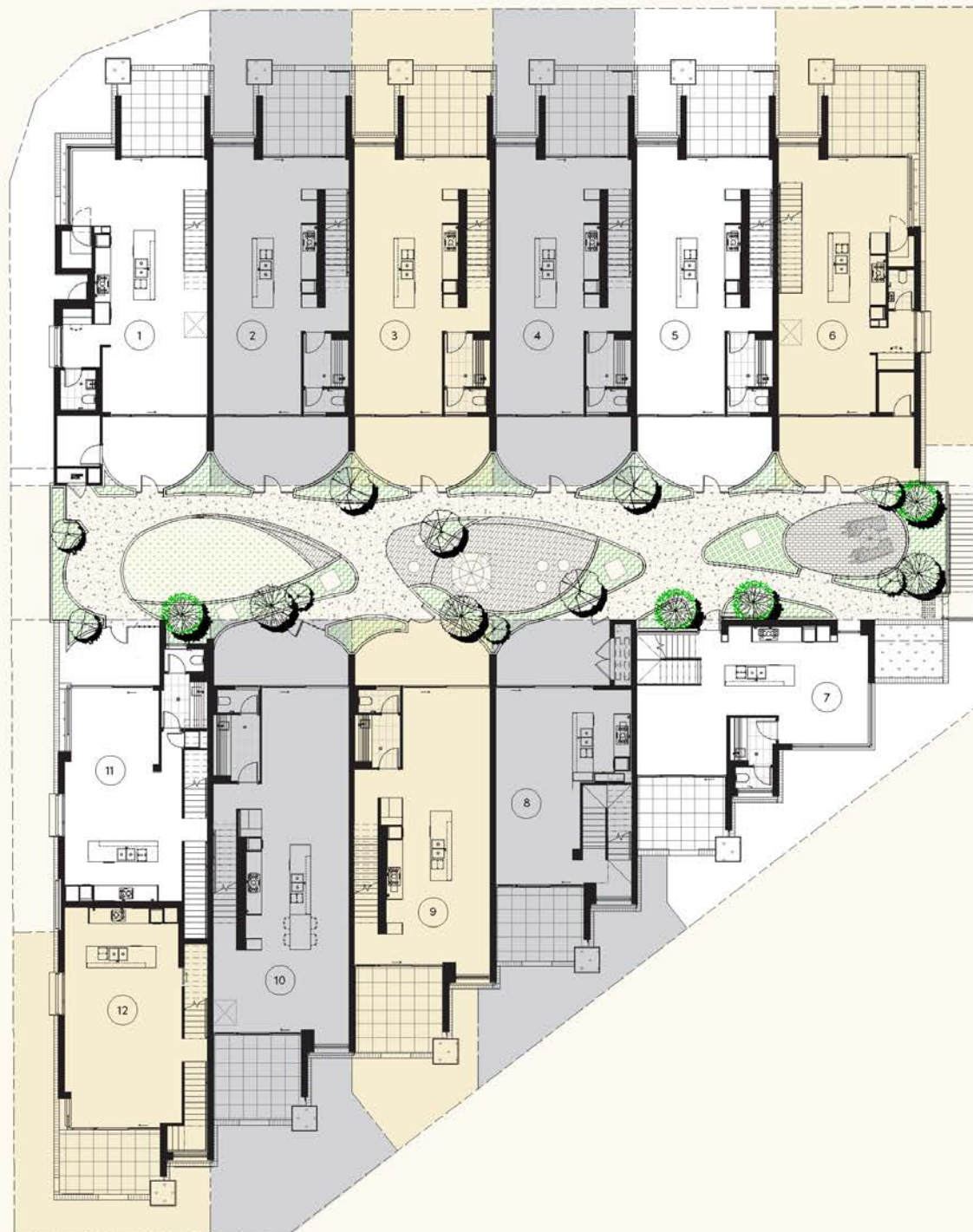
SHENTON PARK

SITE PLAN



LEVEL ONE

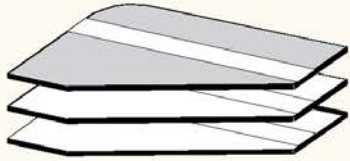
Disclaimer: Terrace home areas given are based on architectural measurements which may vary from strata areas as different methods of measurement are applied. Variations from the strata plan may also apply. Loose furniture is indicative only. Shapes and configuration of living areas, balconies, wall structures, doors, windows, columns, air-conditioning condensers and ducts may differ from those illustrated.



Park Terraces

SHENTON PARK

SITE PLAN



LEVEL TWO

Disclaimer: Terrace home areas given are based on architectural measurements which may vary from strata areas as different methods of measurement are applied. Variations from the strata plan may also apply. Loose furniture is indicative only. Shops and configuration of living areas, balconies, wall structures, doors, windows, columns, air-conditioning condensers and ducts may differ from those illustrated.



Park Terraces

SHENTON PARK