

ELYSIAN

SUBIACO

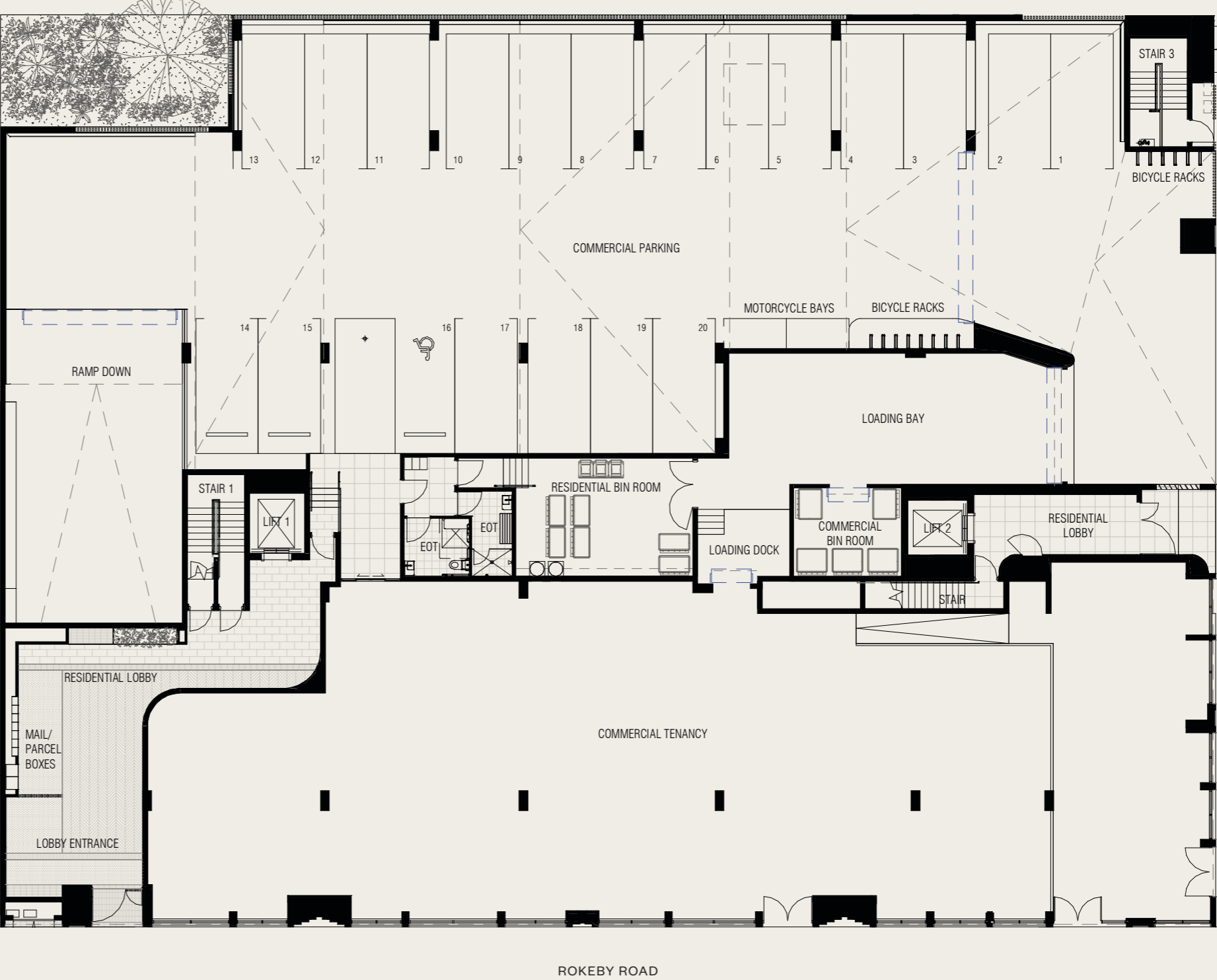
Plan Book



Level Plans

ELYSIAN

SUBIACO



Ground Level



Disclaimer: Variations from strata plans may apply. Loose furniture is indicative only. Shape and configuration of living areas, balconies, wall structure, doors, windows, columns, air-conditioning condensers and ducts may differ from those illustrated. Apartment areas given are based on architectural measurements which may vary from strata areas as different methods of measurement are applied.

ELYSIAN

SUBIACO



Level One

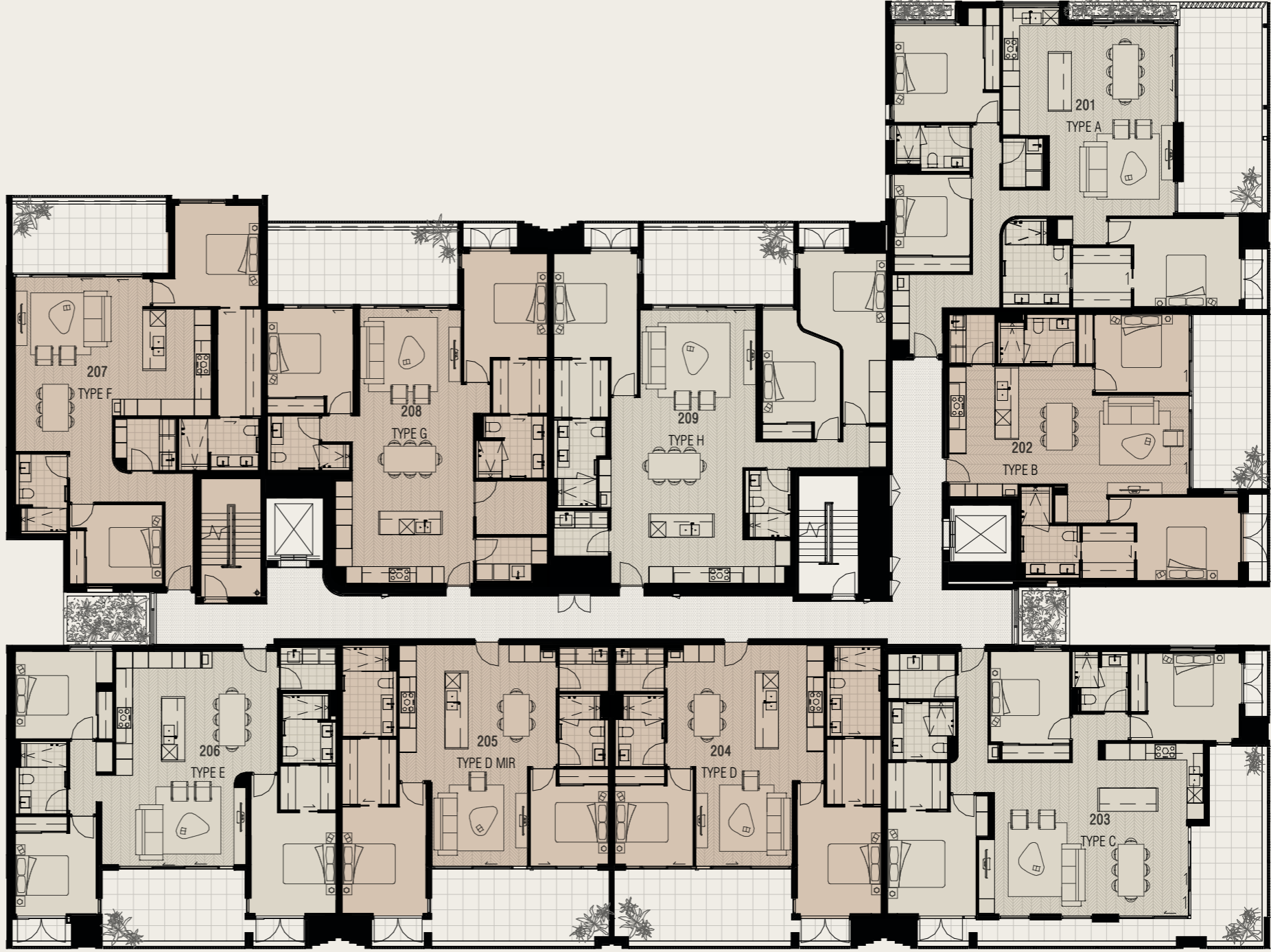


Disclaimer: Variations from strata plans may apply. Loose furniture is indicative only. Shape and configuration of living areas, balconies, wall structure, doors, windows, columns, air-conditioning condensers and ducts may differ from those illustrated. Apartment areas given are based on architectural measurements which may vary from strata areas as different methods of measurement are applied.

● 2 BEDROOM ● 3 BEDROOM

ELYSIAN

SUBIACO



DUKE STREET

ROKEBY ROAD

Level Two

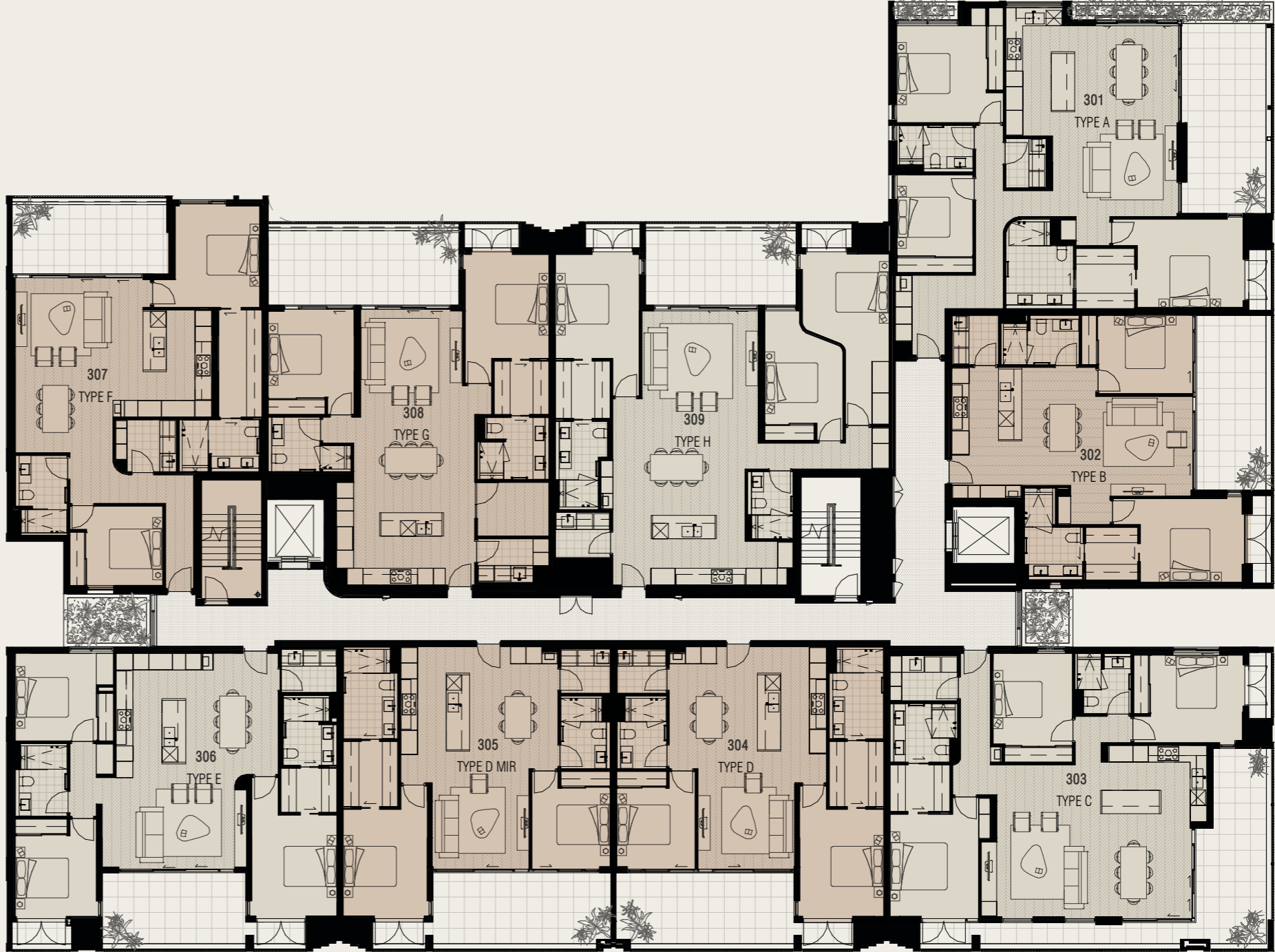


Disclaimer: Variations from strata plans may apply. Loose furniture is indicative only. Shape and configuration of living areas, balconies, wall structure, doors, windows, columns, air-conditioning condensers and ducts may differ from those illustrated. Apartment areas given are based on architectural measurements which may vary from strata areas as different methods of measurement are applied.

● 2 BEDROOM ● 3 BEDROOM

ELYSIAN

SUBIACO



DUKE STREET

ROKEBY ROAD

Level Three

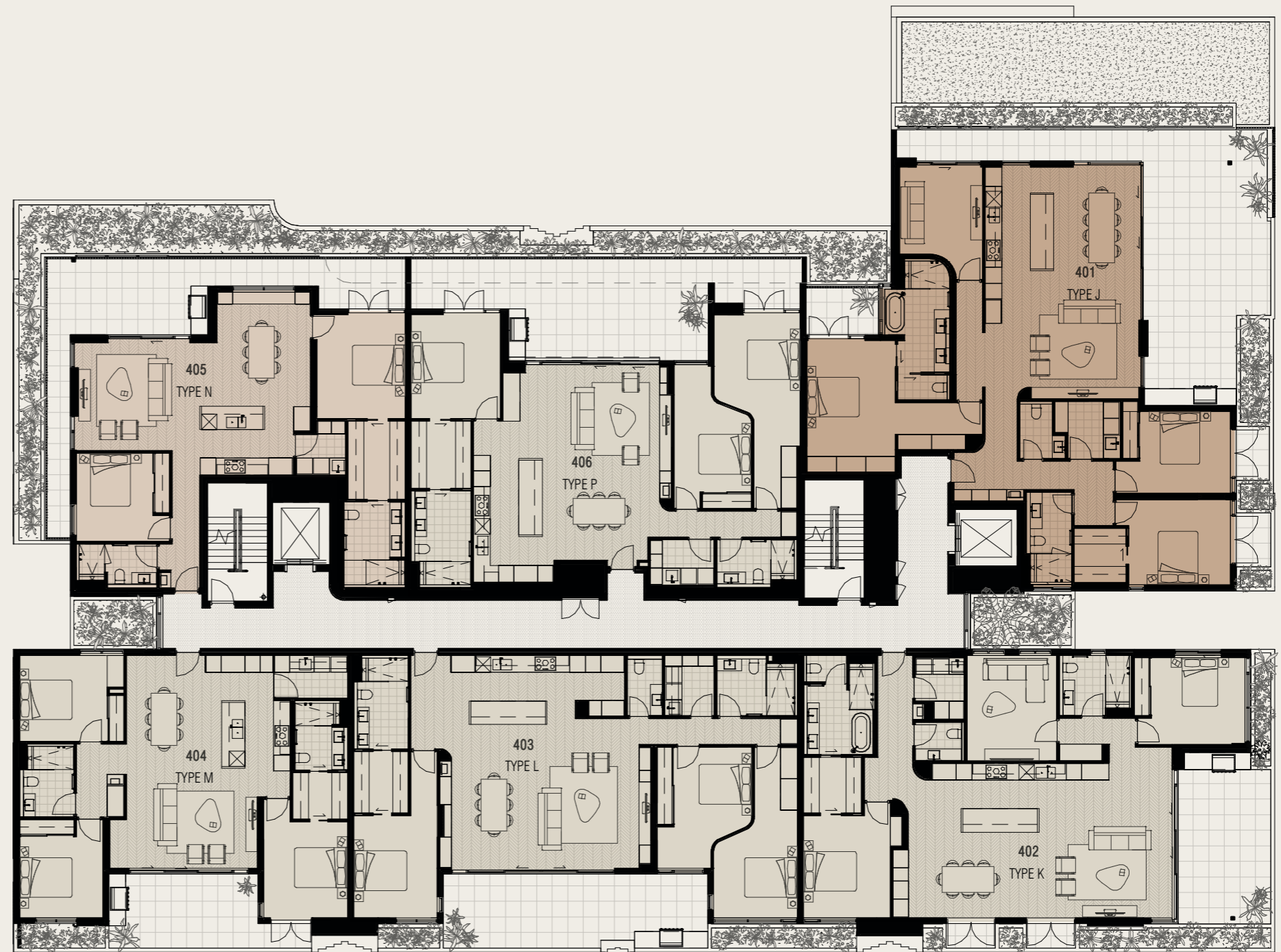


Disclaimer: Variations from strata plans may apply. Loose furniture is indicative only. Shape and configuration of living areas, balconies, wall structure, doors, windows, columns, air-conditioning condensers and ducts may differ from those illustrated. Apartment areas given are based on architectural measurements which may vary from strata areas as different methods of measurement are applied.

● 2 BEDROOM ● 3 BEDROOM

ELYSIAN

SUBIACO



DUKE STREET

ROKEBY ROAD

Level Four

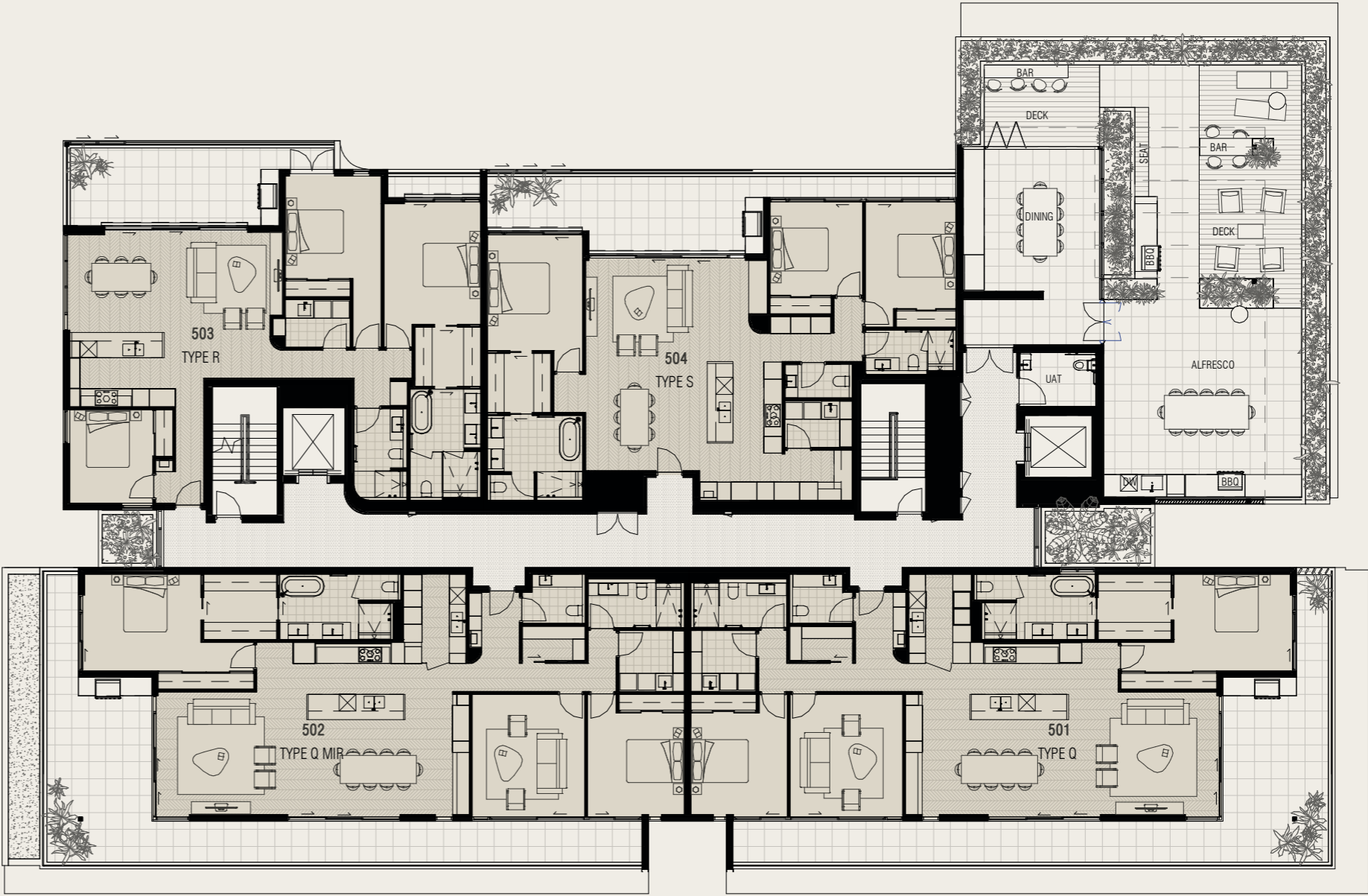


Disclaimer: Variations from strata plans may apply. Loose furniture is indicative only. Shape and configuration of living areas, balconies, wall structure, doors, windows, columns, air-conditioning condensers and ducts may differ from those illustrated. Apartment areas given are based on architectural measurements which may vary from strata areas as different methods of measurement are applied.

● 2 BEDROOM ● 3 BEDROOM ● 4 BEDROOM

ELYSIAN

SUBIACO



DUKE STREET

ROKEBY ROAD

Level Five



Disclaimer: Variations from strata plans may apply. Loose furniture is indicative only. Shape and configuration of living areas, balconies, wall structure, doors, windows, columns, air-conditioning condensers and ducts may differ from those illustrated. Apartment areas given are based on architectural measurements which may vary from strata areas as different methods of measurement are applied.

3 BEDROOM

ELYSIAN

SUBIACO



Basement One



Disclaimer: Variations from strata plans may apply. Loose furniture is indicative only. Shape and configuration of living areas, balconies, wall structure, doors, windows, columns, air-conditioning condensers and ducts may differ from those illustrated. Apartment areas given are based on architectural measurements which may vary from strata areas as different methods of measurement are applied.

ELYSIAN

SUBIACO



Basement Two



Disclaimer: Variations from strata plans may apply. Loose furniture is indicative only. Shape and configuration of living areas, balconies, wall structure, doors, windows, columns, air-conditioning condensers and ducts may differ from those illustrated. Apartment areas given are based on architectural measurements which may vary from strata areas as different methods of measurement are applied.

Floor Plans
2 Bed

ELYSIAN

SUBIACO

Type B

Level One/Two/Three

Apartment 102/202/302

Bedrooms 2

Bathrooms 2

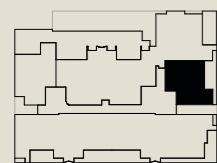
Car Spaces 2

Internal 99m²

External 23m²

Total 122m²

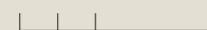
Storage Area 6m²



FIRST FLOOR



1:100 SCALE @ A3



0 0.5 1 2.5M



Disclaimer: Variations from strata plans may apply. Loose furniture is indicative only. Shape and configuration of living areas, balconies, wall structure, doors, windows, columns, air-conditioning condensers and ducts may differ from those illustrated. Apartment areas given are based on architectural measurements which may vary from strata areas as different methods of measurement are applied.

ELYSIAN

SUBIACO

Type D

Level One/Two/Three

Apartment 104/204/304

Bedrooms 2

Bathrooms 2

Car Spaces 2

Internal 99m²

External 23m²

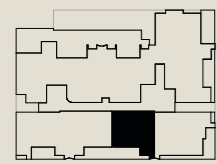
Total 122m²

Storage Area:

Apartment 104 5m²

Apartment 204 6m²

Apartment 304 6m²



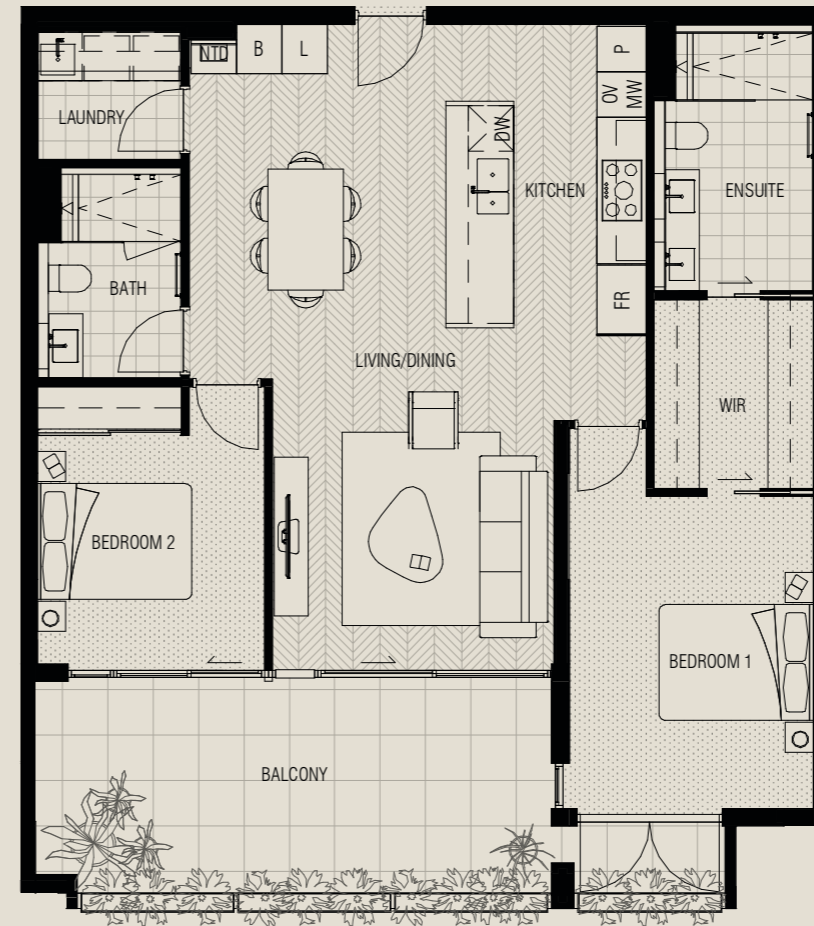
FIRST FLOOR



1:100 SCALE @ A3



0 0.5 1 2.5M



Disclaimer: Variations from strata plans may apply. Loose furniture is indicative only. Shape and configuration of living areas, balconies, wall structure, doors, windows, columns, air-conditioning condensers and ducts may differ from those illustrated. Apartment areas given are based on architectural measurements which may vary from strata areas as different methods of measurement are applied.

ELYSIAN

SUBIACO

Type D (Mirror)

Level One/Two/Three

Apartment 105/205/305

Bedrooms 2

Bathrooms 2

Car Spaces 2

Internal 99m²

External 23m²

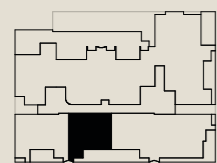
Total 122m²

Storage Area:

Apartment 105 5m²

Apartment 205 6m²

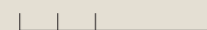
Apartment 305 7m²



FIRST FLOOR



1:100 SCALE @ A3



0 0.5 1 2.5M



Disclaimer: Variations from strata plans may apply. Loose furniture is indicative only. Shape and configuration of living areas, balconies, wall structure, doors, windows, columns, air-conditioning condensers and ducts may differ from those illustrated. Apartment areas given are based on architectural measurements which may vary from strata areas as different methods of measurement are applied.

ELYSIAN

SUBIACO

Type F (Terrace)

Level One

Apartment 107

Bedrooms 2

Bathrooms 2

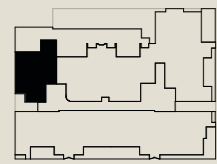
Car Spaces 2

Internal 116m²

External 47m²

Total 163m²

Storage Area 6m²



FIRST FLOOR



1:100 SCALE @ A3



0 0.5 1 2.5M



Disclaimer: Variations from strata plans may apply. Loose furniture is indicative only. Shape and configuration of living areas, balconies, wall structure, doors, windows, columns, air-conditioning condensers and ducts may differ from those illustrated. Apartment areas given are based on architectural measurements which may vary from strata areas as different methods of measurement are applied.

ELYSIAN

SUBIACO

Type F (Balcony)

Level Two/Three

Apartment 207/307

Bedrooms 2

Bathrooms 2

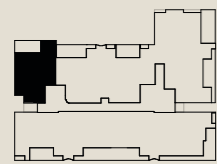
Car Spaces 2

Internal 116m²

External 19m²

Total 135m²

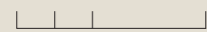
Storage Area 6m²



SECOND FLOOR



1:100 SCALE @ A3



0 0.5 1 2.5M



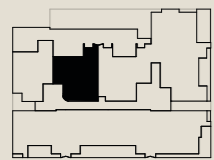
Disclaimer: Variations from strata plans may apply. Loose furniture is indicative only. Shape and configuration of living areas, balconies, wall structure, doors, windows, columns, air-conditioning condensers and ducts may differ from those illustrated. Apartment areas given are based on architectural measurements which may vary from strata areas as different methods of measurement are applied.

ELYSIAN

SUBIACO

Type G (Terrace)

Level	One
Apartment	108
Bedrooms	2
Bathrooms	2
Study	1
Car Spaces	2
Internal	116m ²
External	68m ²
Total	184m ²
Storage Area	6m ²



FIRST FLOOR



1:100 SCALE @ A3



0 0.5 1 2.5M



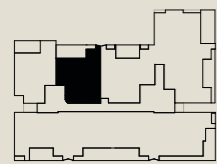
Disclaimer: Variations from strata plans may apply. Loose furniture is indicative only. Shape and configuration of living areas, balconies, wall structure, doors, windows, columns, air-conditioning condensers and ducts may differ from those illustrated. Apartment areas given are based on architectural measurements which may vary from strata areas as different methods of measurement are applied.

ELYSIAN

SUBIACO

Type G (Balcony)

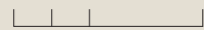
Level	Two/Three
Apartment	208/308
Bedrooms	2
Bathrooms	2
Study	1
Car Spaces	2
Internal	116m ²
External	26m ²
Total	142m ²
Storage Area	6m ²



SECOND FLOOR



1:100 SCALE @ A3



0 0.5 1 2.5M



Disclaimer: Variations from strata plans may apply. Loose furniture is indicative only. Shape and configuration of living areas, balconies, wall structure, doors, windows, columns, air-conditioning condensers and ducts may differ from those illustrated. Apartment areas given are based on architectural measurements which may vary from strata areas as different methods of measurement are applied.

ELYSIAN

SUBIACO

Type N

Level Four

Apartment 405

Bedrooms 2

Bathrooms 2

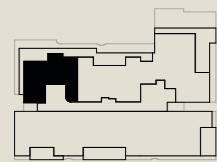
Car Spaces 2

Internal 119m²

External 43m²

Total 162m²

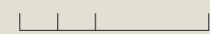
Storage Area 7m²



FOURTH FLOOR



1:100 SCALE @ A3



0 0.5 1 2.5M



Disclaimer: Variations from strata plans may apply. Loose furniture is indicative only. Shape and configuration of living areas, balconies, wall structure, doors, windows, columns, air-conditioning condensers and ducts may differ from those illustrated. Apartment areas given are based on architectural measurements which may vary from strata areas as different methods of measurement are applied.

Floor Plans
3 & 4 Bed

ELYSIAN

SUBIACO

Type A

Level One/Two/Three

Apartment 101/201/301

Bedrooms 3

Bathrooms 2

Car Spaces 2

Internal 143m²

External 31m²

Total 174m²

Storage Area:

Apartment 101 7m²

Apartment 201 11m²

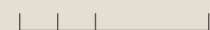
Apartment 301 10m²



FIRST FLOOR



1:100 SCALE @ A3



0 0.5 1 2.5M



Disclaimer: Variations from strata plans may apply. Loose furniture is indicative only. Shape and configuration of living areas, balconies, wall structure, doors, windows, columns, air-conditioning condensers and ducts may differ from those illustrated. Apartment areas given are based on architectural measurements which may vary from strata areas as different methods of measurement are applied.

ELYSIAN

SUBIACO

Type C

Level One/Two/Three

Apartment 103/203/303

Bedrooms 3

Bathrooms 2

Car Spaces 2

Internal 135m²

External 36m²

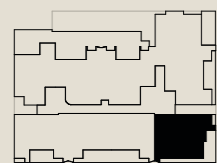
Total 171m²

Storage Area:

Apartment 103 6m²

Apartment 203 8m²

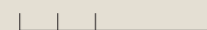
Apartment 303 9m²



FIRST FLOOR



1:100 SCALE @ A3



0 0.5 1 2.5M



Disclaimer: Variations from strata plans may apply. Loose furniture is indicative only. Shape and configuration of living areas, balconies, wall structure, doors, windows, columns, air-conditioning condensers and ducts may differ from those illustrated. Apartment areas given are based on architectural measurements which may vary from strata areas as different methods of measurement are applied.

ELYSIAN

SUBIACO

Type E

Level One/Two/Three

Apartment 106/206/306

Bedrooms 3

Bathrooms 2

Car Spaces 2

Internal 125m²

External 22m²

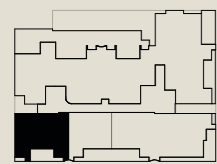
Total 147m²

Storage Area:

Apartment 106 6m²

Apartment 206 6m²

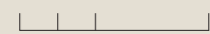
Apartment 306 9m²



FIRST FLOOR



1:100 SCALE @ A3



0 0.5 1 2.5M



Disclaimer: Variations from strata plans may apply. Loose furniture is indicative only. Shape and configuration of living areas, balconies, wall structure, doors, windows, columns, air-conditioning condensers and ducts may differ from those illustrated. Apartment areas given are based on architectural measurements which may vary from strata areas as different methods of measurement are applied.

ELYSIAN

SUBIACO

Type H (Terrace)

Level One

Apartment 109

Bedrooms 3

Bathrooms 2

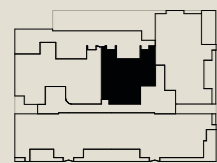
Car Spaces 2

Internal 140m²

External 61m²

Total 201m²

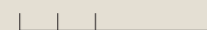
Storage Area 9m²



FIRST FLOOR



1:100 SCALE @ A3



0 0.5 1 2.5M

Disclaimer: Variations from strata plans may apply. Loose furniture is indicative only. Shape and configuration of living areas, balconies, wall structure, doors, windows, columns, air-conditioning condensers and ducts may differ from those illustrated. Apartment areas given are based on architectural measurements which may vary from strata areas as different methods of measurement are applied.



ELYSIAN

SUBIACO

Type H (Balcony)

Level Two/Three

Apartment 209/309

Bedrooms 3

Bathrooms 2

Car Spaces 2

Internal 140m²

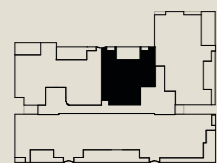
External 23m²

Total 163m²

Storage Area:

Apartment 209 7m²

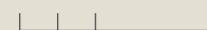
Apartment 309 10m²



SECOND FLOOR



1:100 SCALE @ A3



0 0.5 1 2.5M



Disclaimer: Variations from strata plans may apply. Loose furniture is indicative only. Shape and configuration of living areas, balconies, wall structure, doors, windows, columns, air-conditioning condensers and ducts may differ from those illustrated. Apartment areas given are based on architectural measurements which may vary from strata areas as different methods of measurement are applied.

ELYSIAN

SUBIACO

Type J

Level Four

Apartment 401

Bedrooms 3

Bathrooms 2.5

Study 1

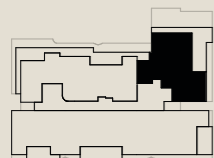
Car Spaces 2

Internal 185m²

External 63m²

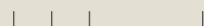
Total 248m²

Storage Area 11m²



FOURTH FLOOR

1:100 SCALE @ A3



0 0.5 1 2.5M

Disclaimer: Variations from strata plans may apply. Loose furniture is indicative only. Shape and configuration of living areas, balconies, wall structure, doors, windows, columns, air-conditioning condensers and ducts may differ from those illustrated. Apartment areas given are based on architectural measurements which may vary from strata areas as different methods of measurement are applied.

ELYSIAN

SUBIACO

Type K

Level Four

Apartment 402

Bedrooms 3

Bathrooms 2.5

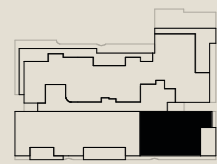
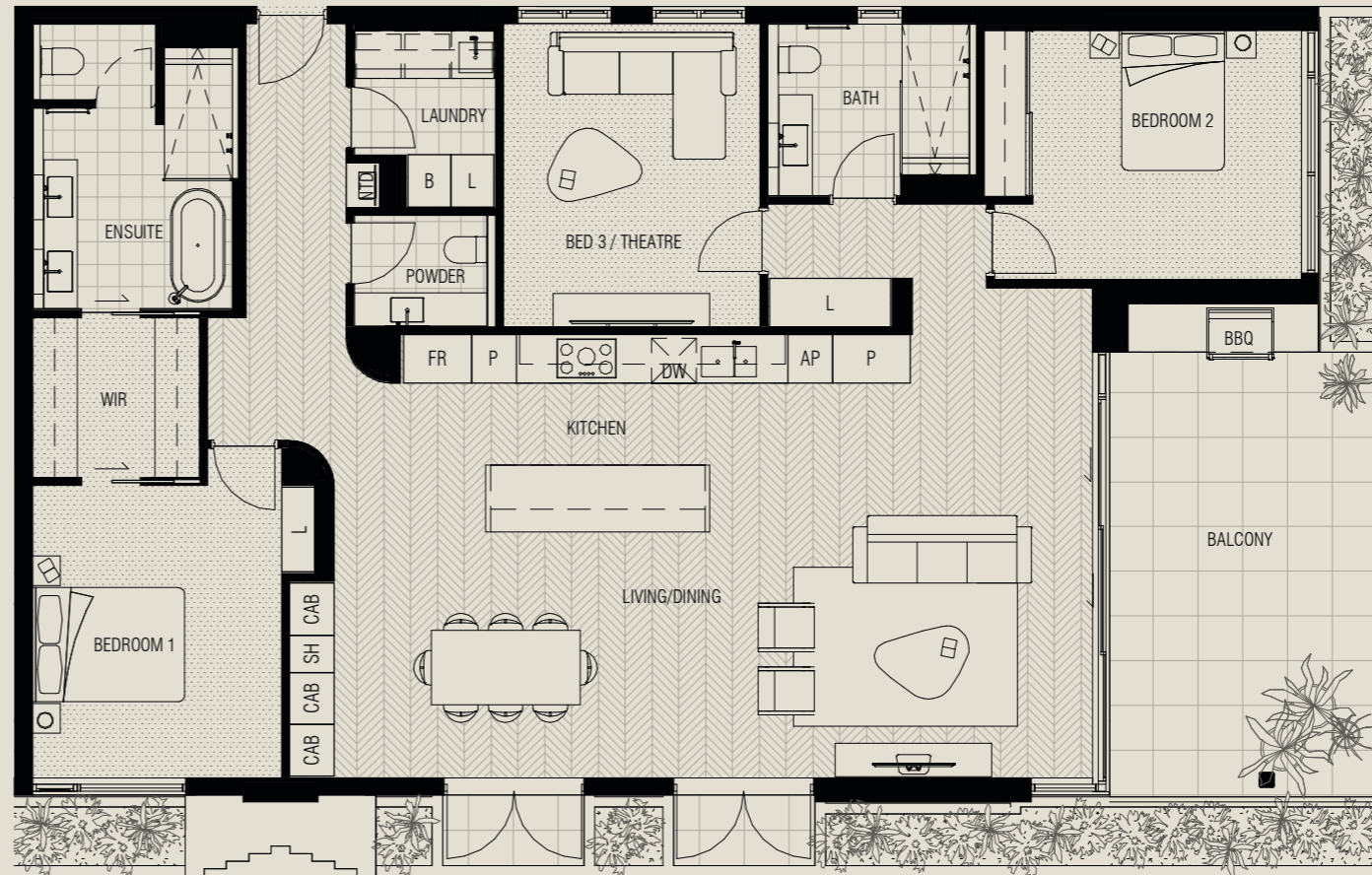
Car Spaces 2

Internal 165m²

External 25m²

Total 190m²

Storage Area 11m²



FOURTH FLOOR



1:100 SCALE @ A3



0 0.5 1 2.5M

Disclaimer: Variations from strata plans may apply. Loose furniture is indicative only. Shape and configuration of living areas, balconies, wall structure, doors, windows, columns, air-conditioning condensers and ducts may differ from those illustrated. Apartment areas given are based on architectural measurements which may vary from strata areas as different methods of measurement are applied.

ELYSIAN

SUBIACO

Type L

Level Four

Apartment 403

Bedrooms 3

Bathrooms 2.5

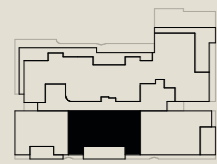
Car Spaces 2

Internal 162m²

External 31m²

Total 193m²

Storage Area 10m²



FOURTH FLOOR



1:100 SCALE @ A3



0 0.5 1 2.5M

Disclaimer: Variations from strata plans may apply. Loose furniture is indicative only. Shape and configuration of living areas, balconies, wall structure, doors, windows, columns, air-conditioning condensers and ducts may differ from those illustrated. Apartment areas given are based on architectural measurements which may vary from strata areas as different methods of measurement are applied.

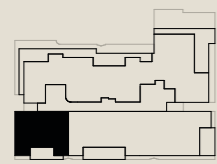


ELYSIAN

SUBIACO

Type M

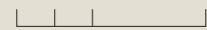
Level	Four
Apartment	404
Bedrooms	3
Bathrooms	2
Car Spaces	2
Internal	126m ²
External	20m ²
Total	146m ²
Storage Area	11m ²



FOURTH FLOOR



1:100 SCALE @ A3



0 0.5 1 2.5M



Disclaimer: Variations from strata plans may apply. Loose furniture is indicative only. Shape and configuration of living areas, balconies, wall structure, doors, windows, columns, air-conditioning condensers and ducts may differ from those illustrated. Apartment areas given are based on architectural measurements which may vary from strata areas as different methods of measurement are applied.

ELYSIAN

SUBIACO

Type P

Level Four

Apartment 406

Bedrooms 3

Bathrooms 2

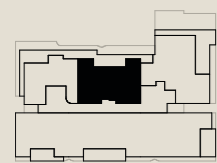
Car Spaces 2

Internal 147m²

External 48m²

Total 195m²

Storage Area 10m²



FOURTH FLOOR

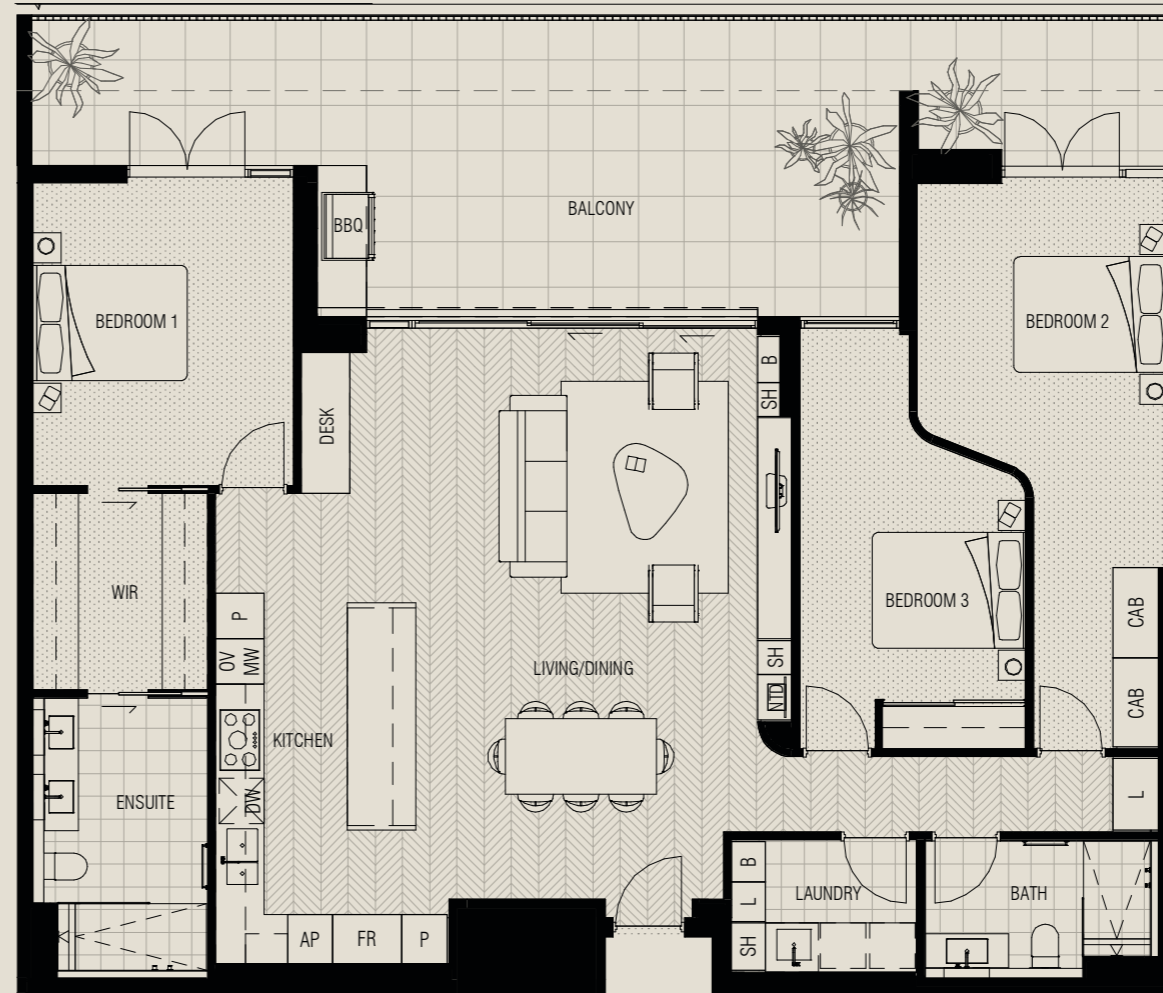


1:100 SCALE @ A3



0 0.5 1 2.5M

Disclaimer: Variations from strata plans may apply. Loose furniture is indicative only. Shape and configuration of living areas, balconies, wall structure, doors, windows, columns, air-conditioning condensers and ducts may differ from those illustrated. Apartment areas given are based on architectural measurements which may vary from strata areas as different methods of measurement are applied.



ELYSIAN

SUBIACO

Type Q

Level Five

Apartment 501

Bedrooms 3

Bathrooms 2.5

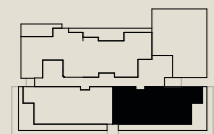
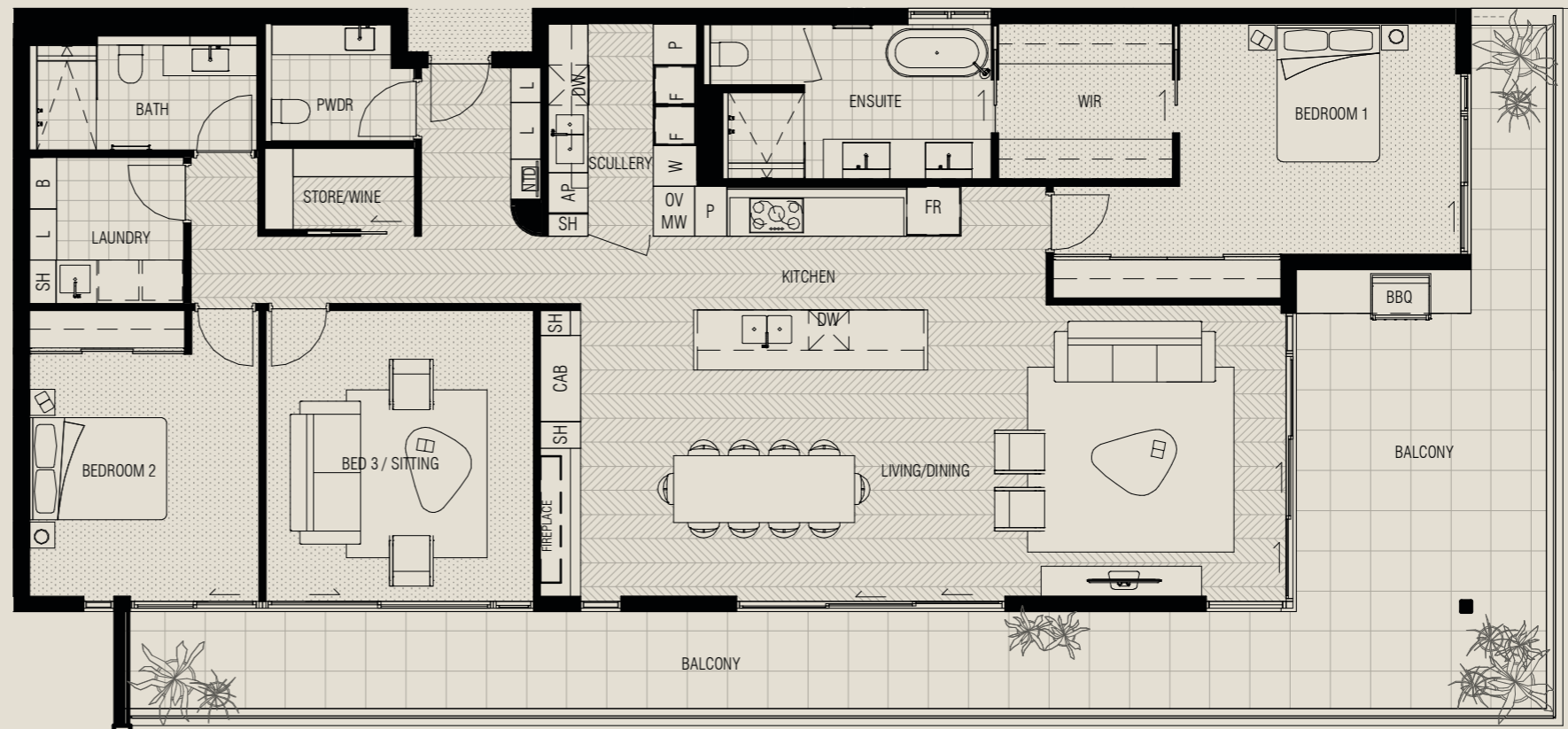
Car Spaces 3

Internal 179m²

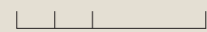
External 62m²

Total 241m²

Storage Area 10m²



1:100 SCALE @ A3



FIFTH FLOOR

0 0.5 1 2.5M

Disclaimer: Variations from strata plans may apply. Loose furniture is indicative only. Shape and configuration of living areas, balconies, wall structure, doors, windows, columns, air-conditioning condensers and ducts may differ from those illustrated. Apartment areas given are based on architectural measurements which may vary from strata areas as different methods of measurement are applied.

ELYSIAN

SUBIACO

Type Q (Mirror)

Level Five

Apartment 502

Bedrooms 3

Bathrooms 2.5

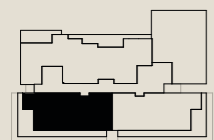
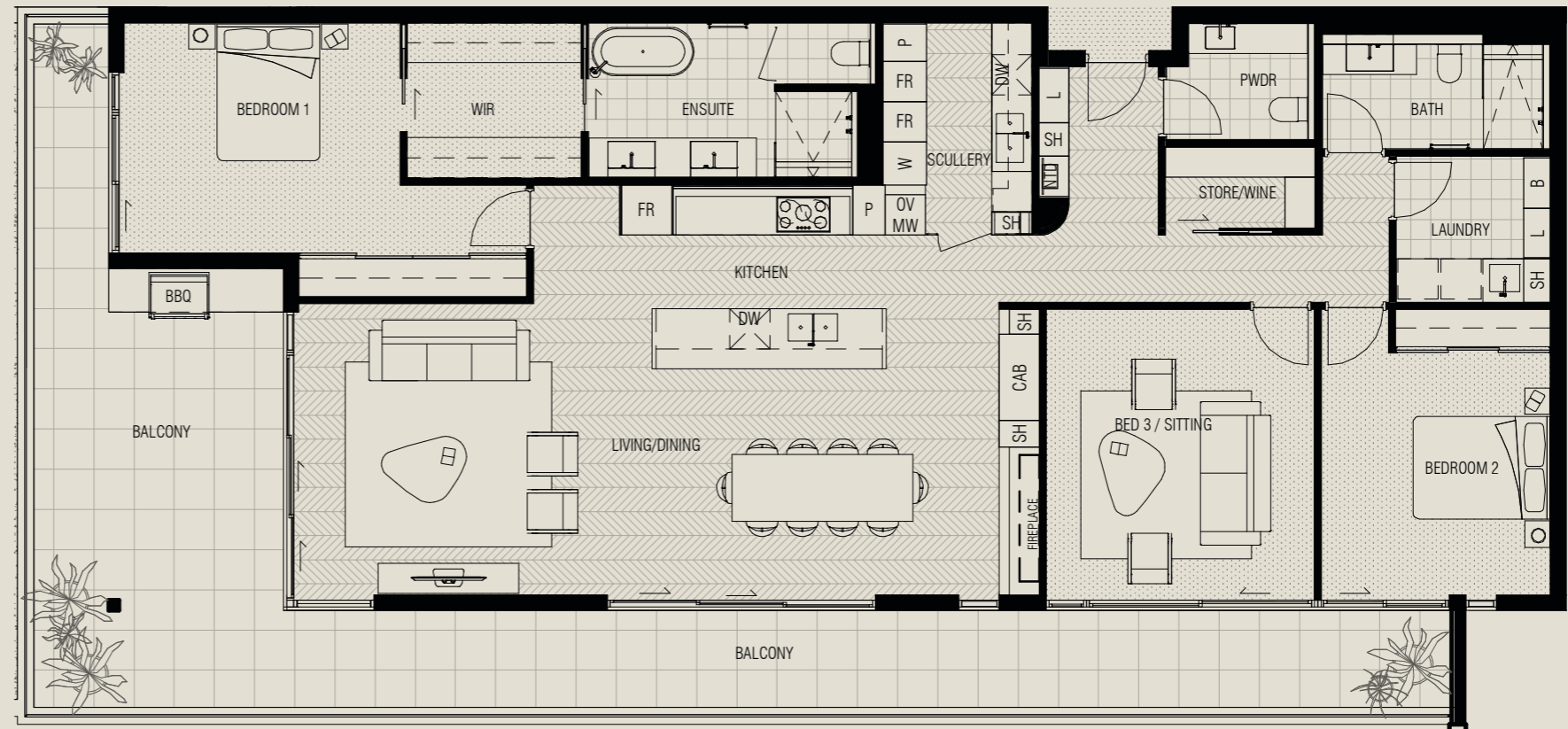
Car Spaces 3

Internal 179m²

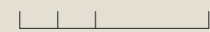
External 62m²

Total 241m²

Storage Area 10m²



1:100 SCALE @ A3



FIFTH FLOOR

0 0.5 1 2.5M

Disclaimer: Variations from strata plans may apply. Loose furniture is indicative only. Shape and configuration of living areas, balconies, wall structure, doors, windows, columns, air-conditioning condensers and ducts may differ from those illustrated. Apartment areas given are based on architectural measurements which may vary from strata areas as different methods of measurement are applied.

ELYSIAN

SUBIACO

Type R

Level Five

Apartment 503

Bedrooms 3

Bathrooms 2

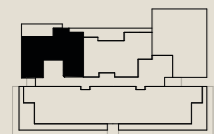
Car Spaces 2

Internal 137m²

External 25m²

Total 162m²

Storage Area 10m²



1:100 SCALE @ A3



FIFTH FLOOR

0 0.5 1 2.5M

Disclaimer: Variations from strata plans may apply. Loose furniture is indicative only. Shape and configuration of living areas, balconies, wall structure, doors, windows, columns, air-conditioning condensers and ducts may differ from those illustrated. Apartment areas given are based on architectural measurements which may vary from strata areas as different methods of measurement are applied.



ELYSIAN

SUBIACO

Type S

Level Five

Apartment 504

Bedrooms 3

Bathrooms 2.5

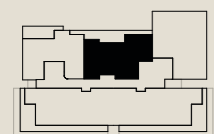
Car Spaces 2

Internal 147m²

External 34m²

Total 181m²

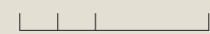
Storage Area 10m²



FIFTH FLOOR



1:100 SCALE @ A3



0 0.5 1 2.5M

Disclaimer: Variations from strata plans may apply. Loose furniture is indicative only. Shape and configuration of living areas, balconies, wall structure, doors, windows, columns, air-conditioning condensers and ducts may differ from those illustrated. Apartment areas given are based on architectural measurements which may vary from strata areas as different methods of measurement are applied.







ARTIST IMPRESSION



385 ROKEBY RD, SUBIACO

A boutique collection of 37 homes at the Paris end of Subiaco.

elysiansubiaco.com.au

CELSIUS PROPERTY

1300 CELSIUS | 08 6144 0700

info@celsius.com.au

°CELSIUS
DEVELOPMENTS



DESIGNED BY:

