

ELYSIAN

SUBIACO

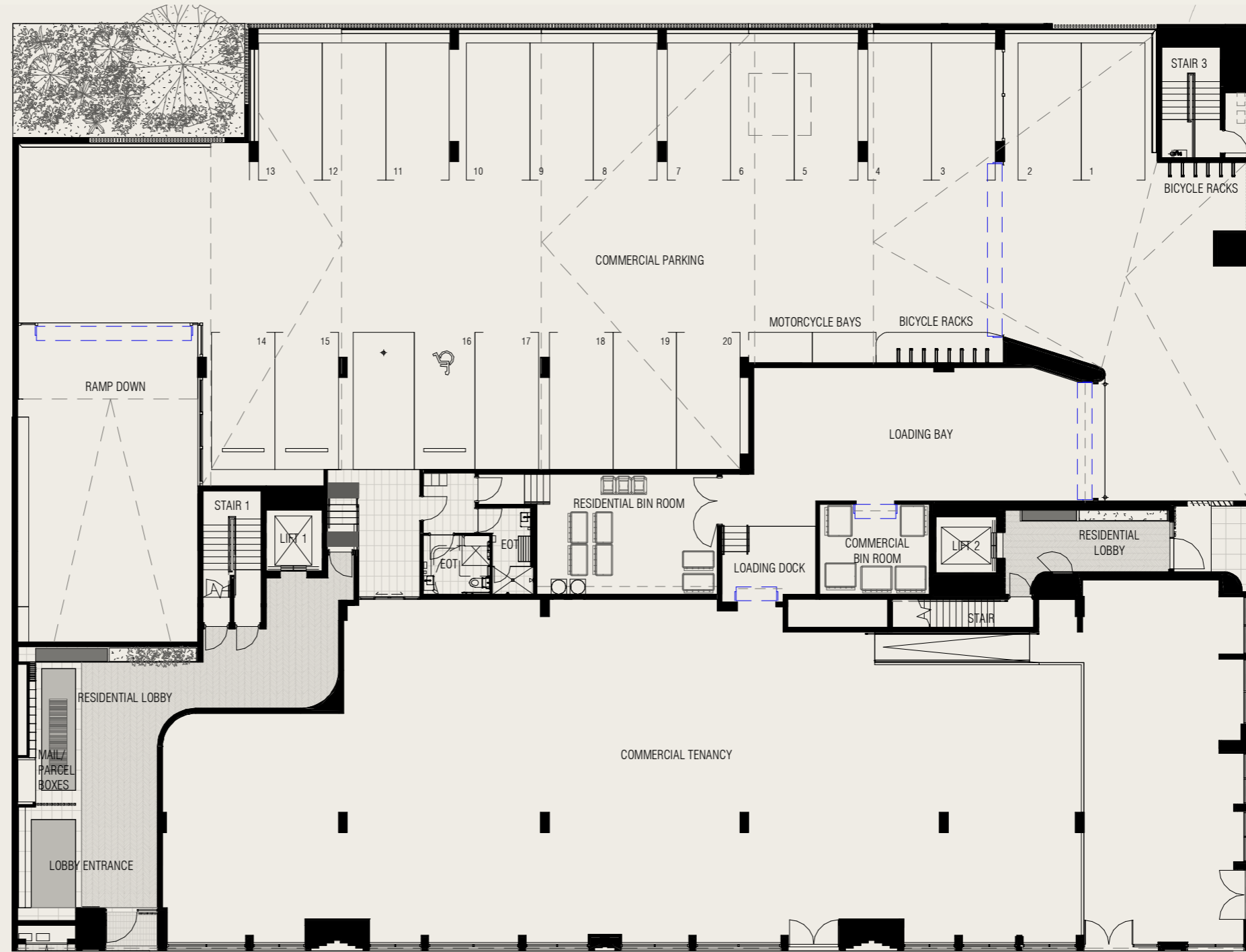
Plan Book



Level Plans

ELYSIAN

SUBIACO



Ground Level



ROKEBY ROAD

Disclaimer: Variations from strata plans may apply. Loose furniture is indicative only. Shape and configuration of living areas, balconies, wall structure, doors, windows, columns, air-conditioning condensers and ducts may differ from those illustrated. Apartment areas given are based on architectural measurements which may vary from strata areas as different methods of measurement are applied.

ELYSIAN

SUBIACO



Level One

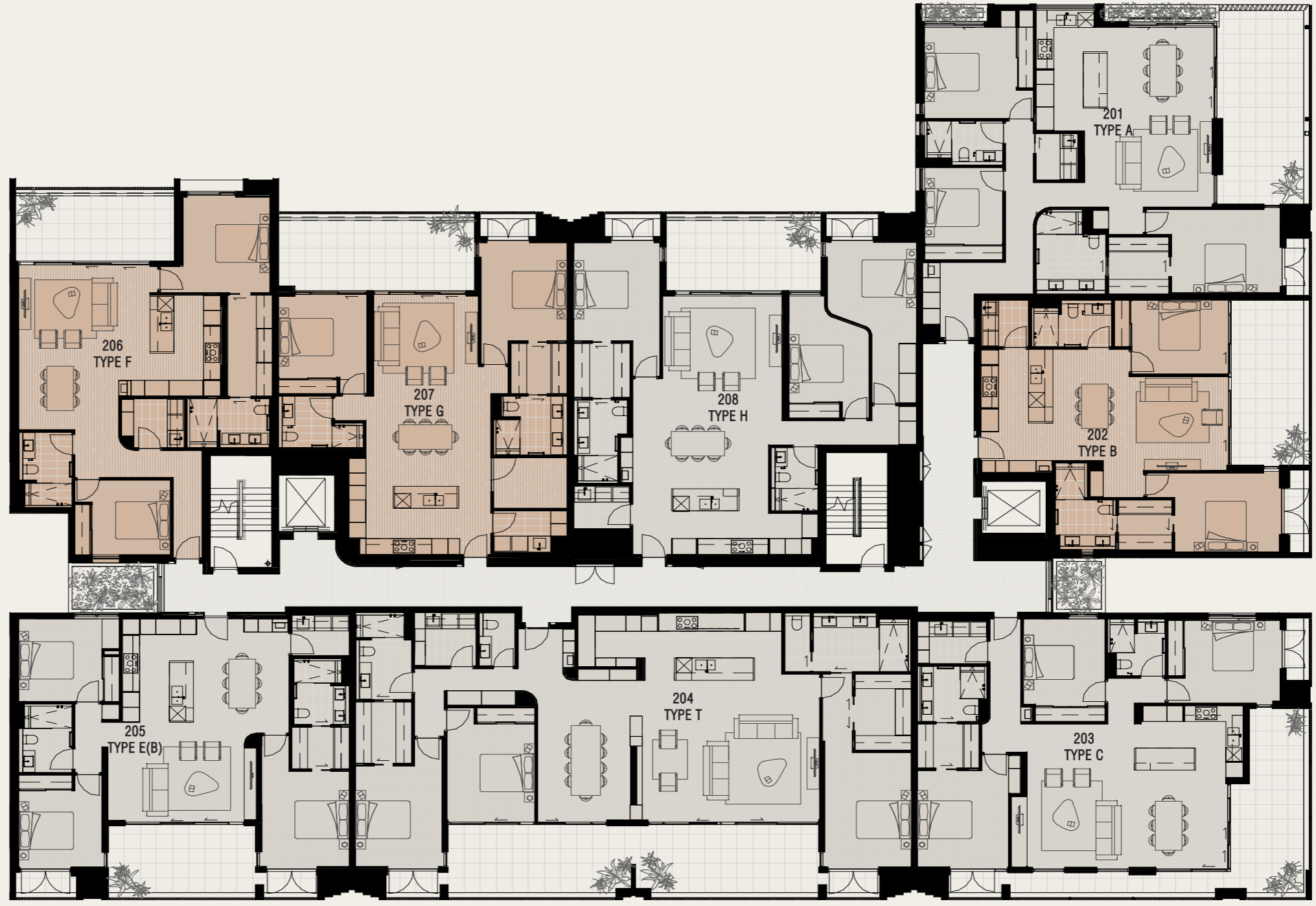


Disclaimer: Variations from strata plans may apply. Loose furniture is indicative only. Shape and configuration of living areas, balconies, wall structure, doors, windows, columns, air-conditioning condensers and ducts may differ from those illustrated. Apartment areas given are based on architectural measurements which may vary from strata areas as different methods of measurement are applied.

● 2 BEDROOM ● 3 BEDROOM

ELYSIAN

SUBIACO



Level Two



ROKEBY ROAD

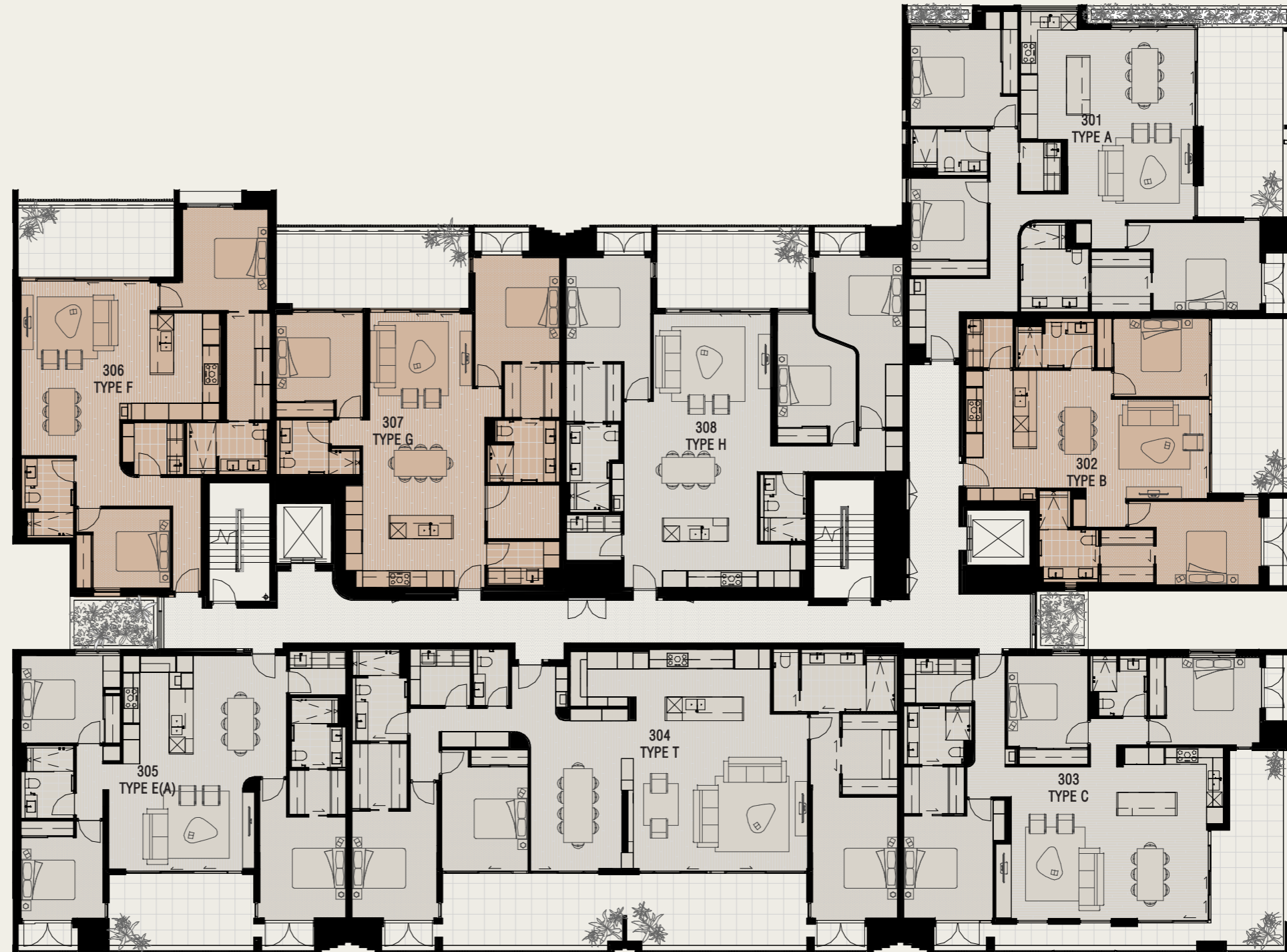
DUKE STREET

Disclaimer: Variations from strata plans may apply. Loose furniture is indicative only. Shape and configuration of living areas, balconies, wall structure, doors, windows, columns, air-conditioning condensers and ducts may differ from those illustrated. Apartment areas given are based on architectural measurements which may vary from strata areas as different methods of measurement are applied.

● 2 BEDROOM ● 3 BEDROOM

ELYSIAN

SUBIACO



Level Three



ROKEBY ROAD

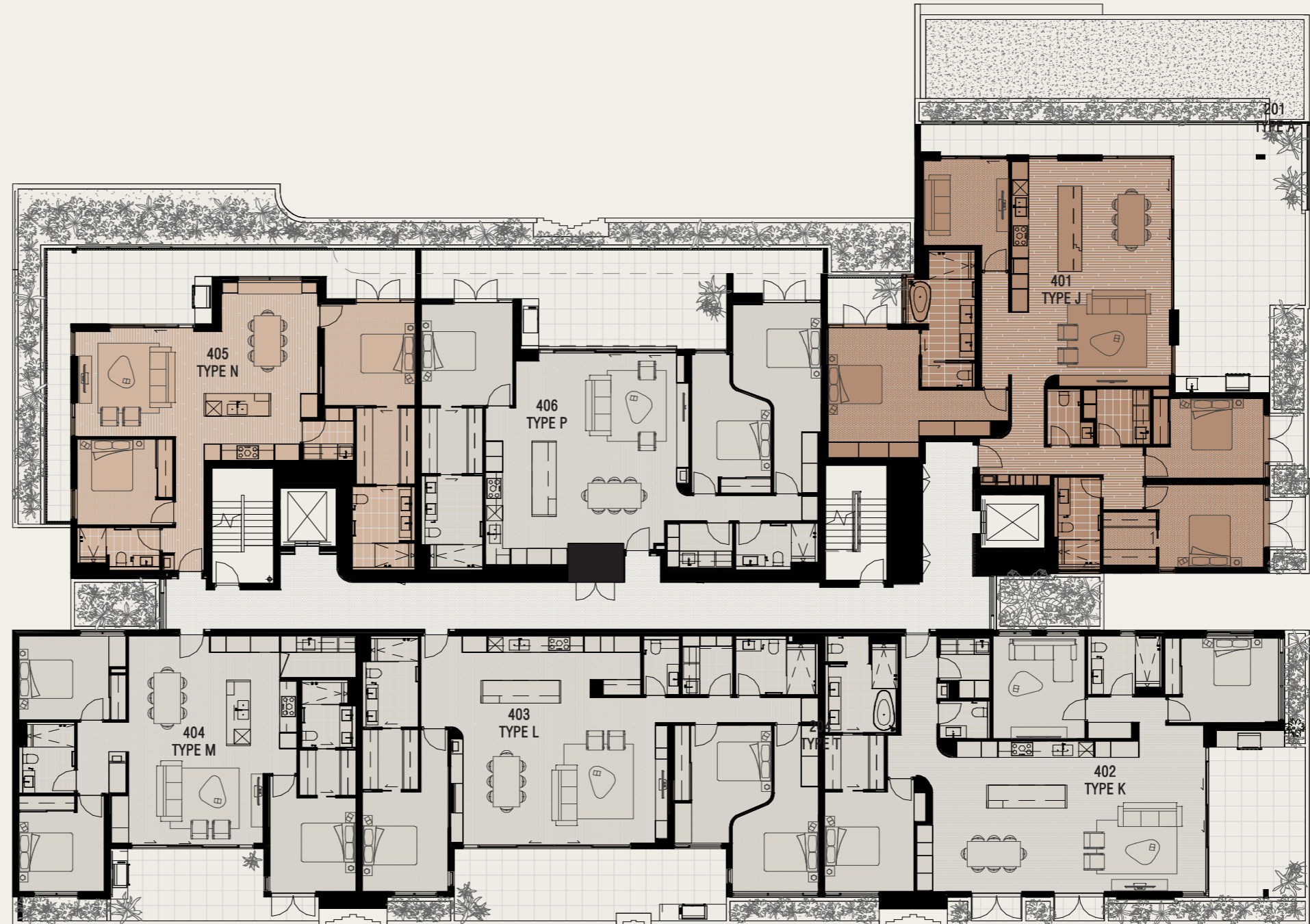
DUKE STREET

Disclaimer: Variations from strata plans may apply. Loose furniture is indicative only. Shape and configuration of living areas, balconies, wall structure, doors, windows, columns, air-conditioning condensers and ducts may differ from those illustrated. Apartment areas given are based on architectural measurements which may vary from strata areas as different methods of measurement are applied.

● 2 BEDROOM ● 3 BEDROOM

ELYSIAN

SUBIACO



Level Four



ROKEBY ROAD

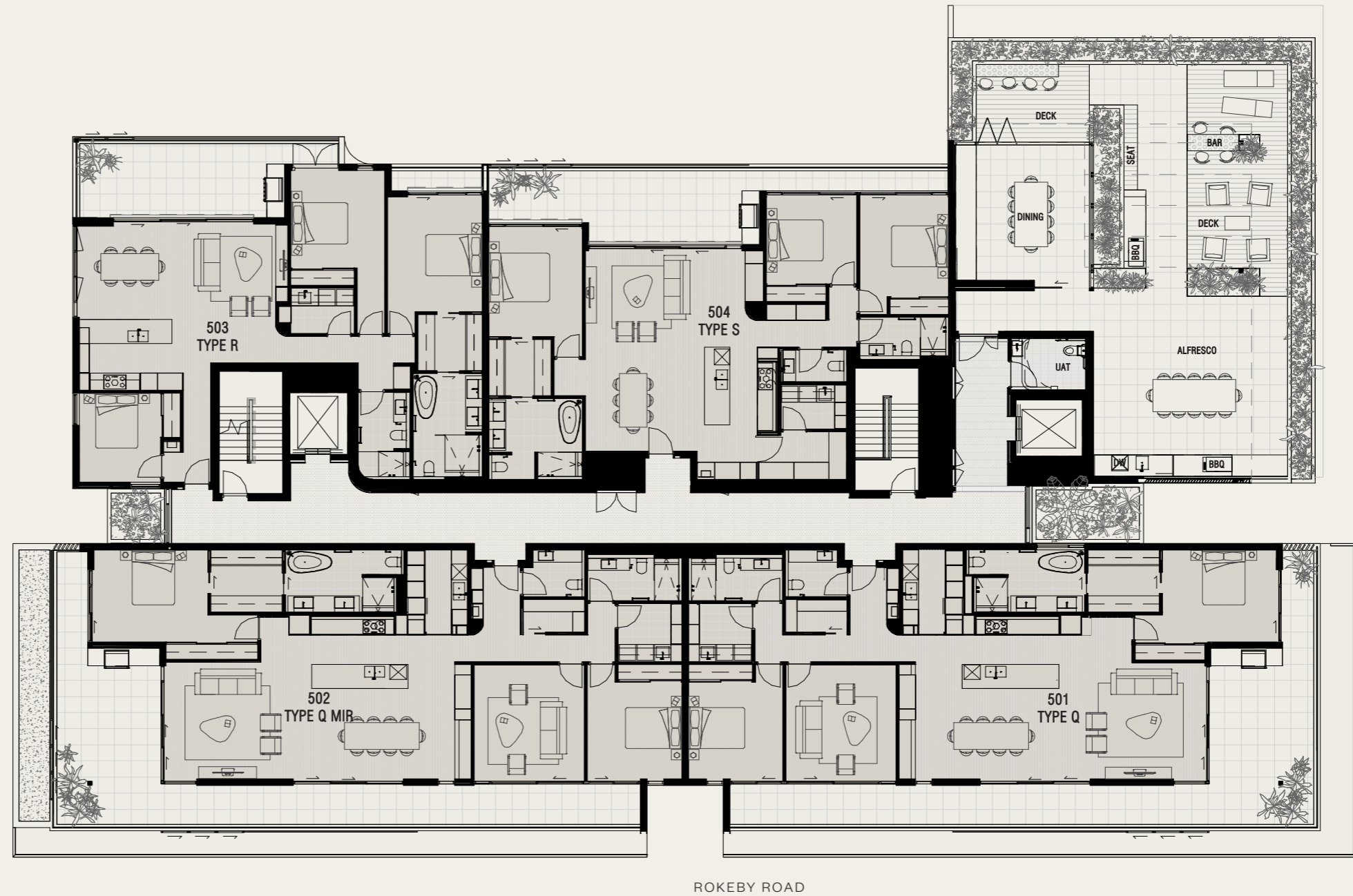
DUKE STREET

Disclaimer: Variations from strata plans may apply. Loose furniture is indicative only. Shape and configuration of living areas, balconies, wall structure, doors, windows, columns, air-conditioning condensers and ducts may differ from those illustrated. Apartment areas given are based on architectural measurements which may vary from strata areas as different methods of measurement are applied.

● 2 BEDROOM ● 3 BEDROOM ● 4 BEDROOM

ELYSIAN

SUBIACO



Level Five

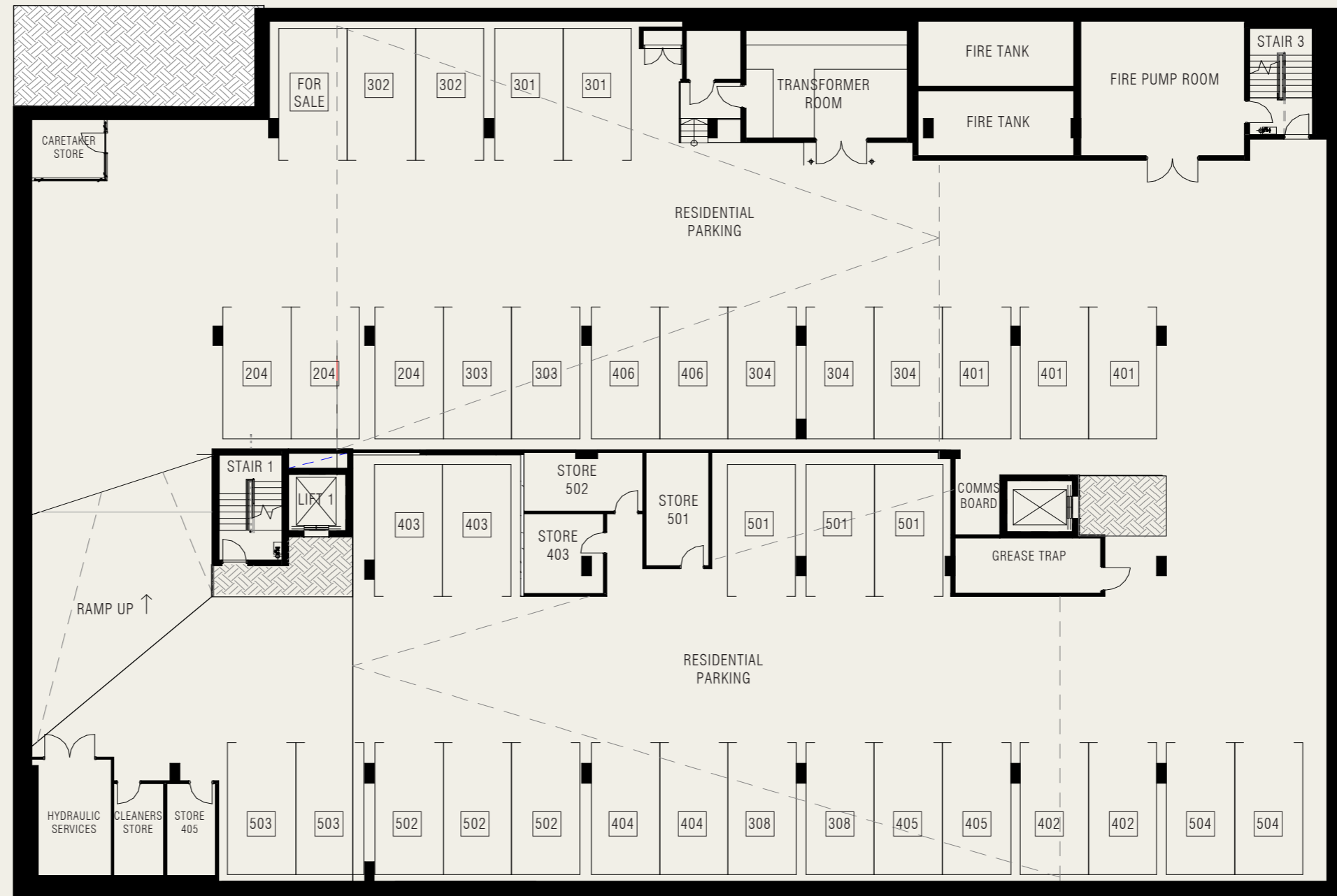


Disclaimer: Variations from strata plans may apply. Loose furniture is indicative only. Shape and configuration of living areas, balconies, wall structure, doors, windows, columns, air-conditioning condensers and ducts may differ from those illustrated. Apartment areas given are based on architectural measurements which may vary from strata areas as different methods of measurement are applied.

● 2 BEDROOM ● 3 BEDROOM

ELYSIAN

SUBIACO



Basement One



ROKEBY ROAD

Disclaimer: Variations from strata plans may apply. Loose furniture is indicative only. Shape and configuration of living areas, balconies, wall structure, doors, windows, columns, air-conditioning condensers and ducts may differ from those illustrated. Apartment areas given are based on architectural measurements which may vary from strata areas as different methods of measurement are applied.

ELYSIAN

SUBIACO



Basement Two



ROKEBY ROAD

Disclaimer: Variations from strata plans may apply. Loose furniture is indicative only. Shape and configuration of living areas, balconies, wall structure, doors, windows, columns, air-conditioning condensers and ducts may differ from those illustrated. Apartment areas given are based on architectural measurements which may vary from strata areas as different methods of measurement are applied.



Floor Plans
2 Bed

ELYSIAN

SUBIACO

Type B

Level One/Two/Three

Apartment 102/202/302

Bedrooms 2

Bathrooms 2

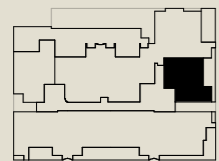
Car Spaces 2

Internal 99m²

External 23m²

Total 122m²

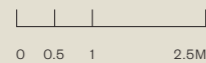
Storage Area 6m²



FIRST/SECOND/THIRD FLOOR



1:100 SCALE @ A3



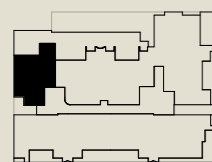
Disclaimer: Variations from strata plans may apply. Loose furniture is indicative only. Shape and configuration of living areas, balconies, wall structure, doors, windows, columns, air-conditioning condensers and ducts may differ from those illustrated. Apartment areas given are based on architectural measurements which may vary from strata areas as different methods of measurement are applied.

ELYSIAN

SUBIACO

Type F (Terrace)

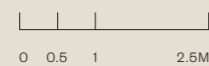
Level	One
Apartment	106
Bedrooms	2
Bathrooms	2
Car Spaces	2
Internal	116m ²
External	47m ²
Total	163m ²
Storage Area	5m ²



FIRST FLOOR



1:100 SCALE @ A3



Disclaimer: Variations from strata plans may apply. Loose furniture is indicative only. Shape and configuration of living areas, balconies, wall structure, doors, windows, columns, air-conditioning condensers and ducts may differ from those illustrated. Apartment areas given are based on architectural measurements which may vary from strata areas as different methods of measurement are applied.

ELYSIAN

SUBIACO

Type F (Balcony)

Level Two/Three

Apartment 206/306

Bedrooms 2

Bathrooms 2

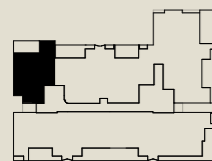
Car Spaces 2

Internal 116m²

External 19m²

Total 135m²

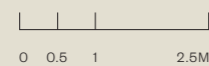
Storage Area: 5m²



SECOND/THIRD FLOOR



1:100 SCALE @ A3



Disclaimer: Variations from strata plans may apply. Loose furniture is indicative only. Shape and configuration of living areas, balconies, wall structure, doors, windows, columns, air-conditioning condensers and ducts may differ from those illustrated. Apartment areas given are based on architectural measurements which may vary from strata areas as different methods of measurement are applied.

ELYSIAN

SUBIACO

Type G (Terrace)

Level One

Apartment 107

Bedrooms 2

Bathrooms 2

Study 1

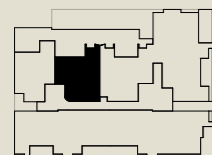
Car Spaces 2

Internal 116m²

External 68m²

Total 184m²

Storage Area 5m²



FIRST FLOOR



1:100 SCALE @ A3



0 0.5 1 2.5M



Disclaimer: Variations from strata plans may apply. Loose furniture is indicative only. Shape and configuration of living areas, balconies, wall structure, doors, windows, columns, air-conditioning condensers and ducts may differ from those illustrated. Apartment areas given are based on architectural measurements which may vary from strata areas as different methods of measurement are applied.

ELYSIAN

SUBIACO

Type G (Balcony)

Level Two/Three

Apartment 207/307

Bedrooms 2

Bathrooms 2

Study 1

Car Spaces 2

Internal 116m²

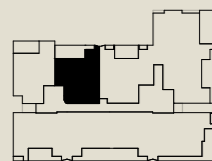
External 26m²

Total 142m²

Storage Area:

Apartment 207 6m²

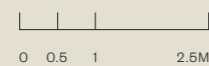
Apartment 307 5m²



SECOND/THIRD FLOOR



1:100 SCALE @ A3



Disclaimer: Variations from strata plans may apply. Loose furniture is indicative only. Shape and configuration of living areas, balconies, wall structure, doors, windows, columns, air-conditioning condensers and ducts may differ from those illustrated. Apartment areas given are based on architectural measurements which may vary from strata areas as different methods of measurement are applied.

Floor Plans
3 & 4 Bed

ELYSIAN

SUBIACO

Type A

Level One/Two/Three

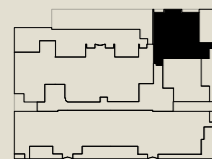
Apartment 101/201/301

Bedrooms 3
Bathrooms 2
Car Spaces 2

Internal 143m²
External 31m²
Total 174m²

Storage Area:

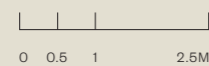
Apartment 101 6m²
Apartment 201 11m²
Apartment 301 10m²



FIRST/SECOND/THIRD FLOOR



1:100 SCALE @ A3



Disclaimer: Variations from strata plans may apply. Loose furniture is indicative only. Shape and configuration of living areas, balconies, wall structure, doors, windows, columns, air-conditioning condensers and ducts may differ from those illustrated. Apartment areas given are based on architectural measurements which may vary from strata areas as different methods of measurement are applied.

ELYSIAN

SUBIACO

Type C

Level One/Two/Three

Apartment 103/203/303

Bedrooms 3

Bathrooms 2

Car Spaces 2

Internal 135m²

External 36m²

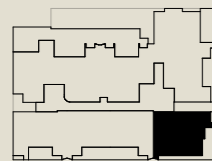
Total 171m²

Storage Area:

Apartment 103 6m²

Apartment 203 8m²

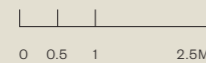
Apartment 303 9m²



FIRST/SECOND/THIRD FLOOR



1:100 SCALE @ A3



Disclaimer: Variations from strata plans may apply. Loose furniture is indicative only. Shape and configuration of living areas, balconies, wall structure, doors, windows, columns, air-conditioning condensers and ducts may differ from those illustrated. Apartment areas given are based on architectural measurements which may vary from strata areas as different methods of measurement are applied.

ELYSIAN

SUBIACO

Type E (A)

Level	One/Three
Apartment	105/305
Bedrooms	3
Bathrooms	2
Car Spaces	2
Internal	125m ²
External	22m ²
Total	147m ²

Storage Area:

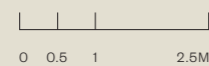
Apartment 105	5m ²
Apartment 305	6m ²



FIRST/THIRD FLOOR



1:100 SCALE @ A3



Disclaimer: Variations from strata plans may apply. Loose furniture is indicative only. Shape and configuration of living areas, balconies, wall structure, doors, windows, columns, air-conditioning condensers and ducts may differ from those illustrated. Apartment areas given are based on architectural measurements which may vary from strata areas as different methods of measurement are applied.

ELYSIAN

SUBIACO

Type E (B)

Level Two

Apartment 205

Bedrooms 3

Bathrooms 2

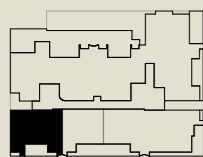
Car Spaces 2

Internal 125m²

External 22m²

Total 147m²

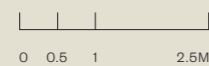
Storage Area 5m²



SECOND FLOOR



1:100 SCALE @ A3



Disclaimer: Variations from strata plans may apply. Loose furniture is indicative only. Shape and configuration of living areas, balconies, wall structure, doors, windows, columns, air-conditioning condensers and ducts may differ from those illustrated. Apartment areas given are based on architectural measurements which may vary from strata areas as different methods of measurement are applied.

ELYSIAN

SUBIACO

Type H (Terrace)

Level One

Apartment 108

Bedrooms 3

Bathrooms 2

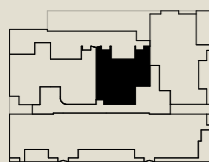
Car Spaces 2

Internal 140m²

External 61m²

Total 201m²

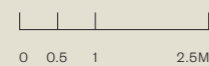
Storage Area 9m²



FIRST FLOOR



1:100 SCALE @ A3



Disclaimer: Variations from strata plans may apply. Loose furniture is indicative only. Shape and configuration of living areas, balconies, wall structure, doors, windows, columns, air-conditioning condensers and ducts may differ from those illustrated. Apartment areas given are based on architectural measurements which may vary from strata areas as different methods of measurement are applied.

ELYSIAN

SUBIACO

Type H (Balcony)

Level Two/Three

Apartment 208/308

Bedrooms 3

Bathrooms 2

Car Spaces 2

Internal 140m²

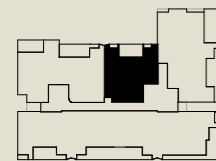
External 23m²

Total 163m²

Storage Area:

Apartment 208 6m²

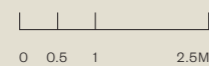
Apartment 308 10m²



SECOND/THIRD FLOOR



1:100 SCALE @ A3



Disclaimer: Variations from strata plans may apply. Loose furniture is indicative only. Shape and configuration of living areas, balconies, wall structure, doors, windows, columns, air-conditioning condensers and ducts may differ from those illustrated. Apartment areas given are based on architectural measurements which may vary from strata areas as different methods of measurement are applied.

ELYSIAN

SUBIACO

Type J

Level Four

Apartment 401

Bedrooms 3

Bathrooms 2.5

Study 1

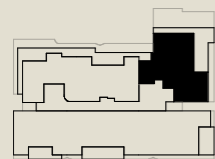
Car Spaces 3

Internal 185m²

External 63m²

Total 248m²

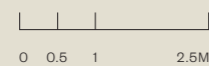
Storage Area 11m²



FOURTH FLOOR



1:100 SCALE @ A3



Disclaimer: Variations from strata plans may apply. Loose furniture is indicative only. Shape and configuration of living areas, balconies, wall structure, doors, windows, columns, air-conditioning condensers and ducts may differ from those illustrated. Apartment areas given are based on architectural measurements which may vary from strata areas as different methods of measurement are applied.

ELYSIAN

SUBIACO

Type K

Level Four

Apartment 402

Bedrooms 3

Bathrooms 2.5

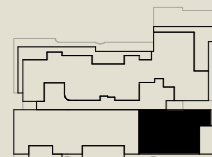
Car Spaces 2

Internal 165m²

External 25m²

Total 190m²

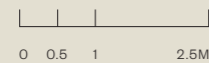
Storage Area 11m²



FOURTH FLOOR



1:100 SCALE @ A3



Disclaimer: Variations from strata plans may apply. Loose furniture is indicative only. Shape and configuration of living areas, balconies, wall structure, doors, windows, columns, air-conditioning condensers and ducts may differ from those illustrated. Apartment areas given are based on architectural measurements which may vary from strata areas as different methods of measurement are applied.

ELYSIAN

SUBIACO

Type L

Level Four

Apartment 403

Bedrooms 3

Bathrooms 2.5

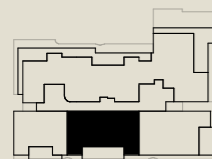
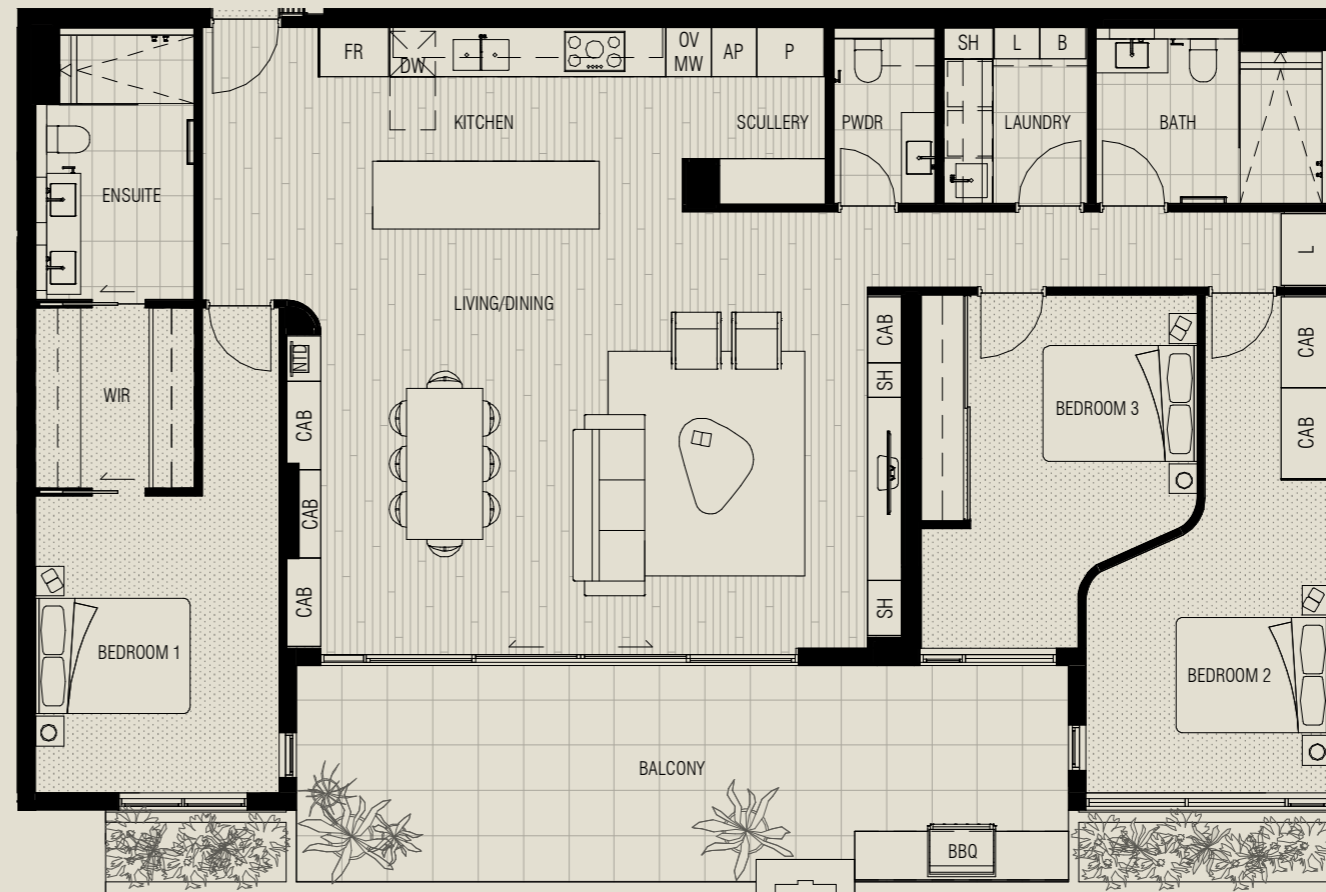
Car Spaces 2

Internal 162m²

External 31m²

Total 193m²

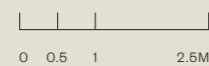
Storage Area 9m²



FOURTH FLOOR



1:100 SCALE @ A3



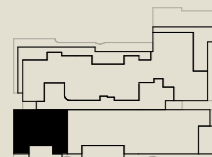
Disclaimer: Variations from strata plans may apply. Loose furniture is indicative only. Shape and configuration of living areas, balconies, wall structure, doors, windows, columns, air-conditioning condensers and ducts may differ from those illustrated. Apartment areas given are based on architectural measurements which may vary from strata areas as different methods of measurement are applied.

ELYSIAN

SUBIACO

Type M

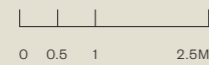
Level	Four
Apartment	404
Bedrooms	3
Bathrooms	2
Car Spaces	2
Internal	126m ²
External	20m ²
Total	146m ²
Storage Area	8m ²



FOURTH FLOOR



1:100 SCALE @ A3



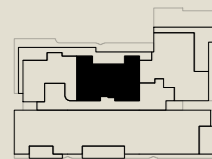
Disclaimer: Variations from strata plans may apply. Loose furniture is indicative only. Shape and configuration of living areas, balconies, wall structure, doors, windows, columns, air-conditioning condensers and ducts may differ from those illustrated. Apartment areas given are based on architectural measurements which may vary from strata areas as different methods of measurement are applied.

ELYSIAN

SUBIACO

Type P

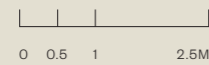
Level	Four
Apartment	406
Bedrooms	3
Bathrooms	2
Car Spaces	2
Internal	147m ²
External	48m ²
Total	195m ²
Storage Area	9m ²



FOURTH FLOOR



1:100 SCALE @ A3



Disclaimer: Variations from strata plans may apply. Loose furniture is indicative only. Shape and configuration of living areas, balconies, wall structure, doors, windows, columns, air-conditioning condensers and ducts may differ from those illustrated. Apartment areas given are based on architectural measurements which may vary from strata areas as different methods of measurement are applied.

ELYSIAN

SUBIACO

Type Q

Level Five

Apartment 501

Bedrooms 3

Bathrooms 2.5

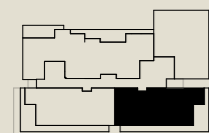
Car Spaces 3

Internal 179m²

External 62m²

Total 241m²

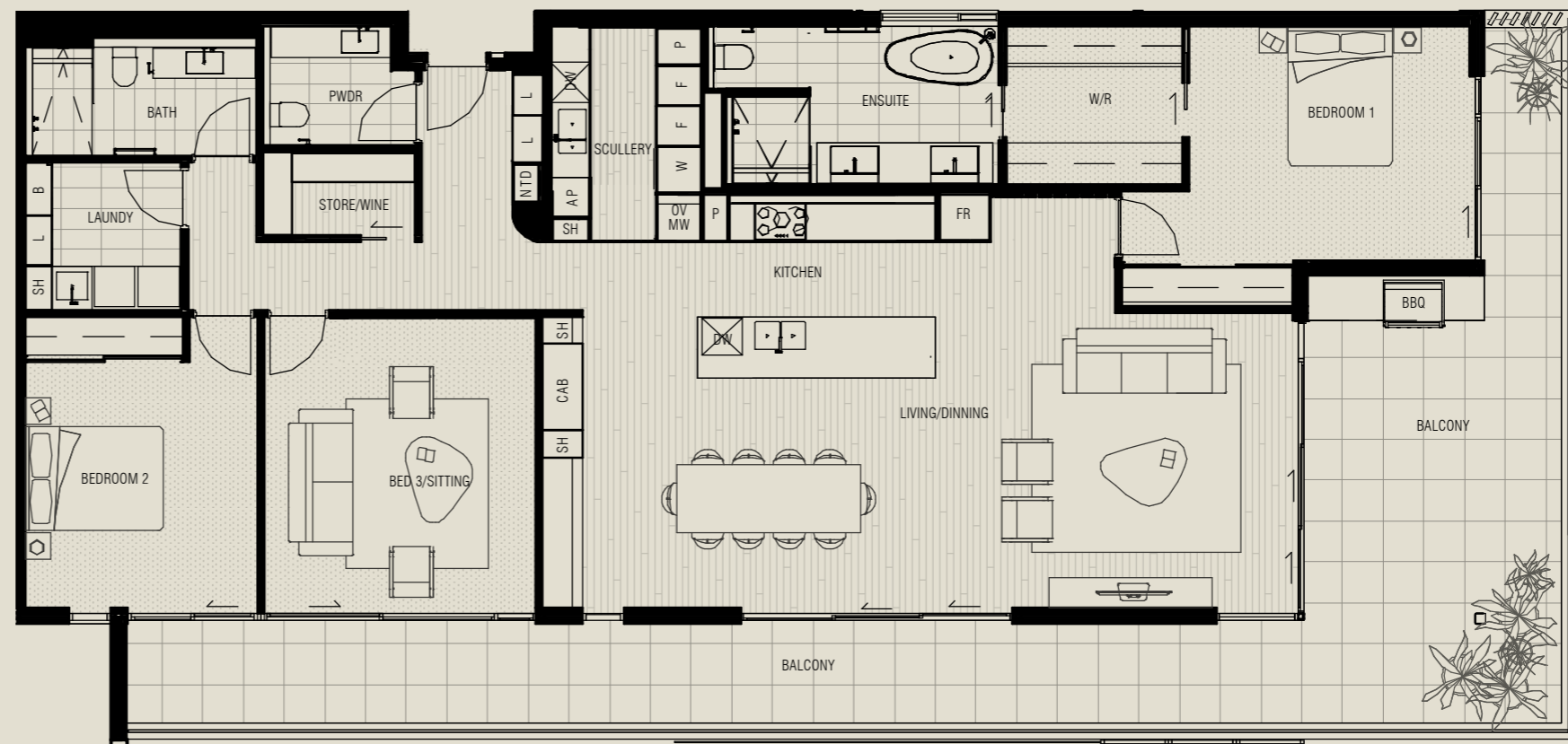
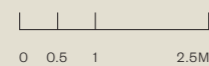
Storage Area 10m²



FIFTH FLOOR



1:100 SCALE @ A3



Disclaimer: Variations from strata plans may apply. Loose furniture is indicative only. Shape and configuration of living areas, balconies, wall structure, doors, windows, columns, air-conditioning condensers and ducts may differ from those illustrated. Apartment areas given are based on architectural measurements which may vary from strata areas as different methods of measurement are applied.

ELYSIAN

SUBIACO

Type Q (Mirror)

Level Five

Apartment 502

Bedrooms 3

Bathrooms 2.5

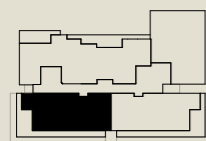
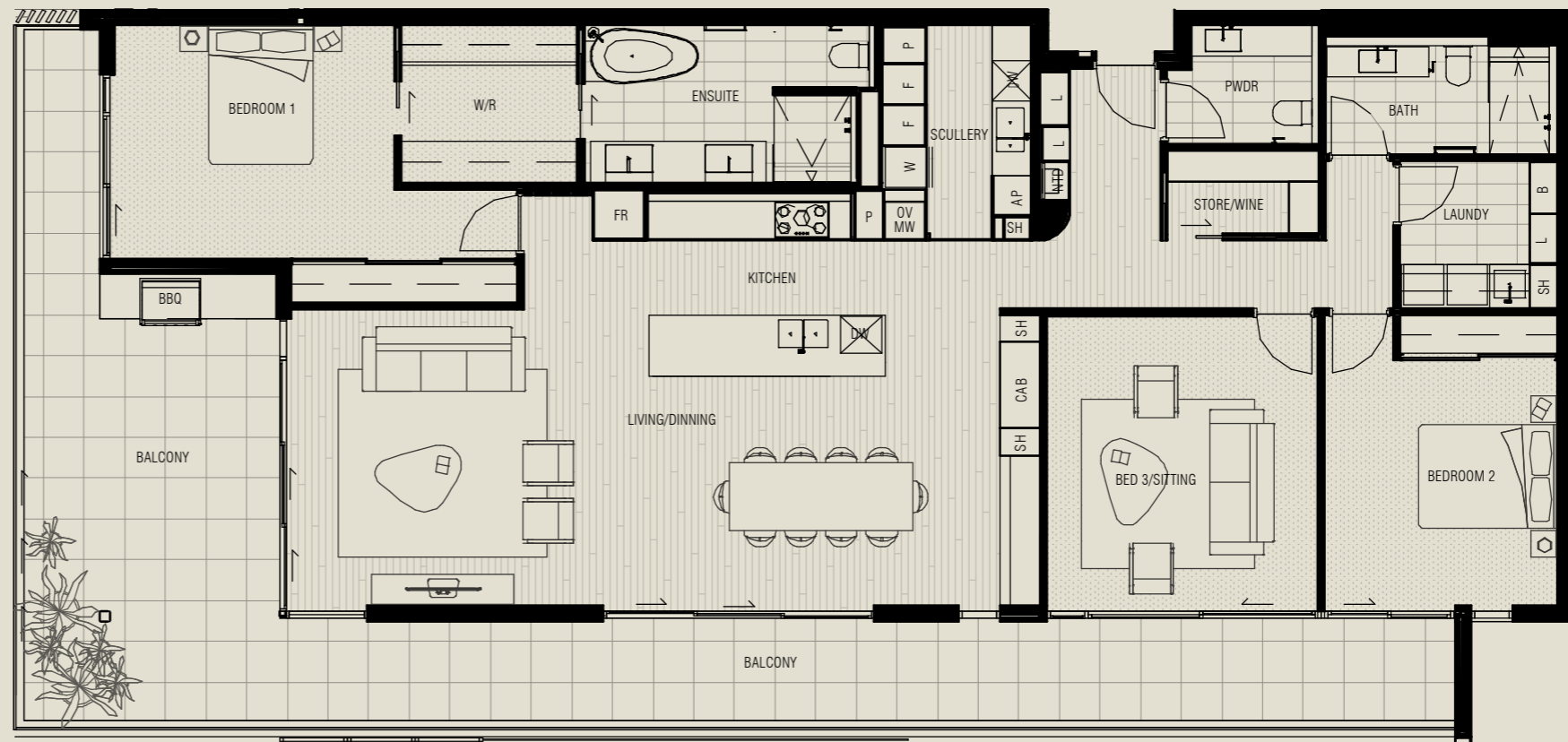
Car Spaces 3

Internal 179m²

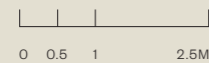
External 62m²

Total 241m²

Storage Area 10m²



1:100 SCALE @ A3



FIFTH FLOOR

Disclaimer: Variations from strata plans may apply. Loose furniture is indicative only. Shape and configuration of living areas, balconies, wall structure, doors, windows, columns, air-conditioning condensers and ducts may differ from those illustrated. Apartment areas given are based on architectural measurements which may vary from strata areas as different methods of measurement are applied.

ELYSIAN

SUBIACO

Type R

Level Five

Apartment 503

Bedrooms 3

Bathrooms 2

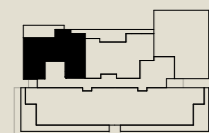
Car Spaces 2

Internal 137m²

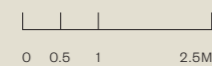
External 25m²

Total 162m²

Storage Area 9m²



1:100 SCALE @ A3



FIFTH FLOOR

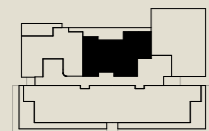
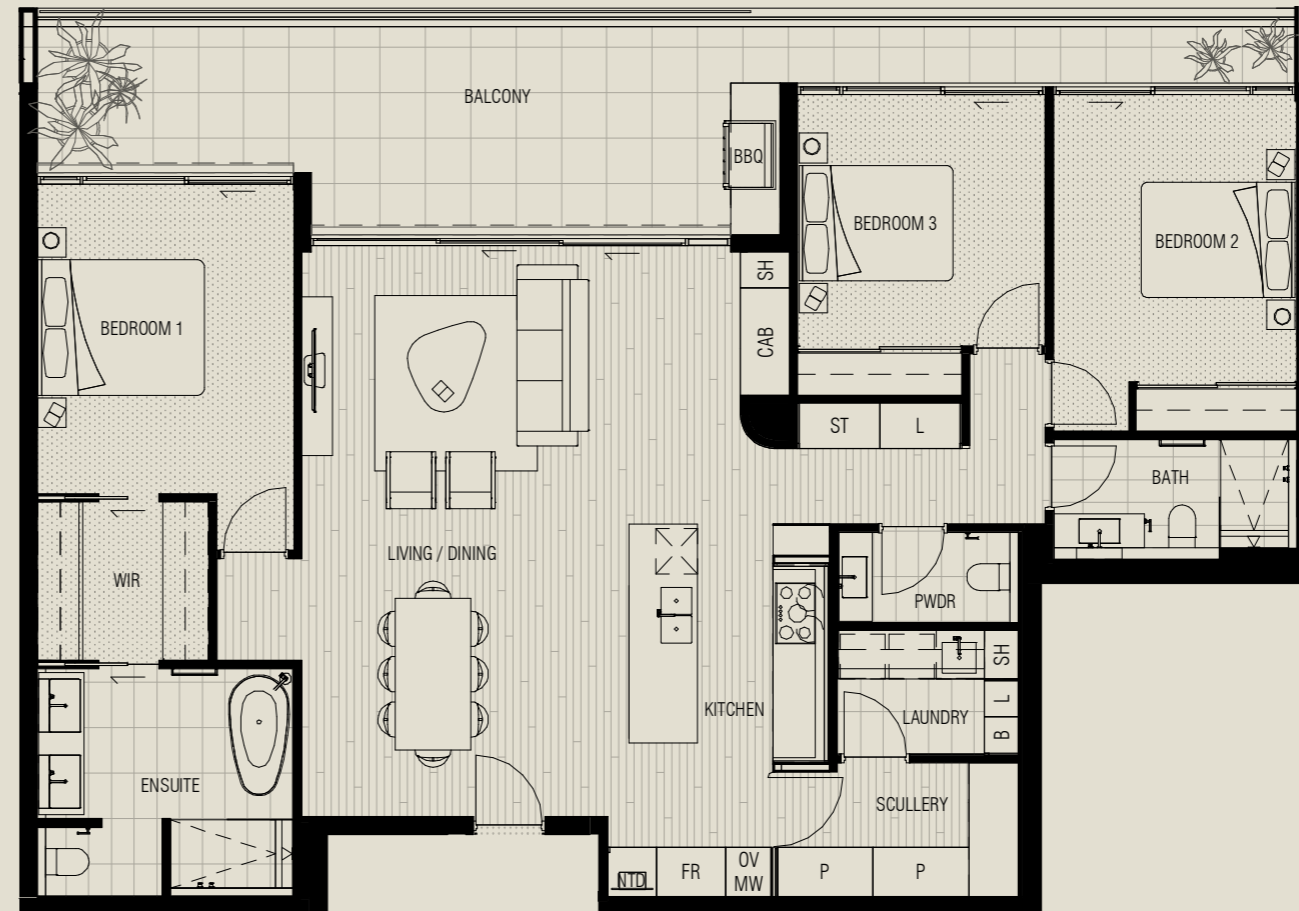
Disclaimer: Variations from strata plans may apply. Loose furniture is indicative only. Shape and configuration of living areas, balconies, wall structure, doors, windows, columns, air-conditioning condensers and ducts may differ from those illustrated. Apartment areas given are based on architectural measurements which may vary from strata areas as different methods of measurement are applied.

ELYSIAN

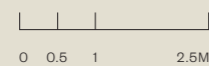
SUBIACO

Type S

Level	Five
Apartment	504
Bedrooms	3
Bathrooms	2.5
Car Spaces	2
Internal	147m ²
External	34m ²
Total	181m ²
Storage Area	9m ²



1:100 SCALE @ A3



FIFTH FLOOR

Disclaimer: Variations from strata plans may apply. Loose furniture is indicative only. Shape and configuration of living areas, balconies, wall structure, doors, windows, columns, air-conditioning condensers and ducts may differ from those illustrated. Apartment areas given are based on architectural measurements which may vary from strata areas as different methods of measurement are applied.

ELYSIAN

SUBIACO

Type T

Level One/Two/Three

Apartment 104/204/304

Bedrooms 3

Bathrooms 2.5

Car Spaces 3

Internal 197m²

External 47m²

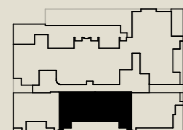
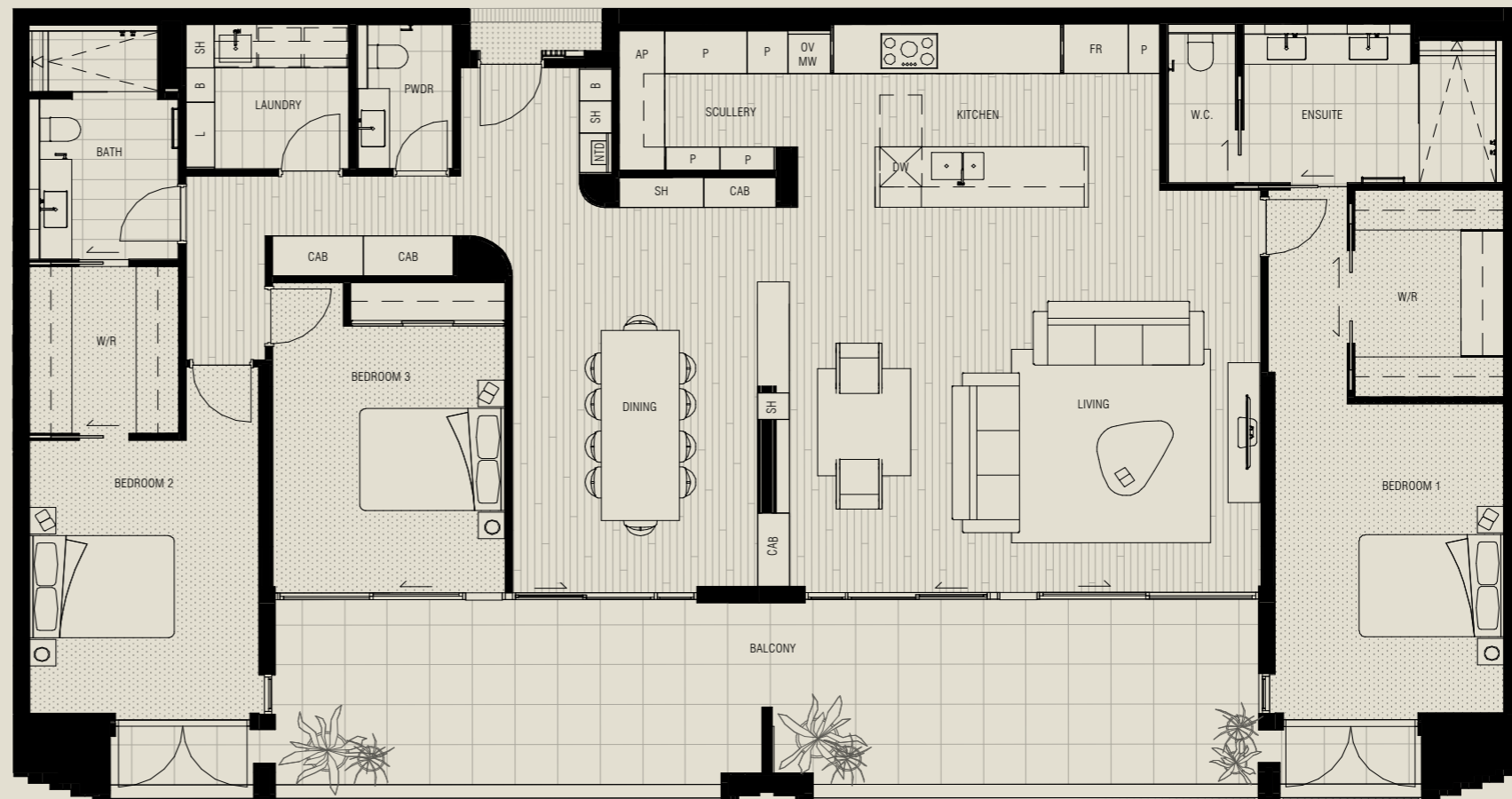
Total 244m²

Storage Area

Apartment 104 9m²

Apartment 204 5+5m²

Apartment 304 12m²



FIRST/SECOND/THIRD FLOOR



1:100 SCALE @ A3



Disclaimer: Variations from strata plans may apply. Loose furniture is indicative only. Shape and configuration of living areas, balconies, wall structure, doors, windows, columns, air-conditioning condensers and ducts may differ from those illustrated. Apartment areas given are based on architectural measurements which may vary from strata areas as different methods of measurement are applied.





ARTIST IMPRESSION



385 ROKEBY RD, SUBIACO

A boutique collection of 34 homes at the Paris end of Subiaco.

elysiansubiaco.com.au

CELSIUS PROPERTY

1300 CELSIUS | 08 6144 0700

info@celsius.com.au

°CELSIUS
DEVELOPMENTS



DESIGNED BY:

